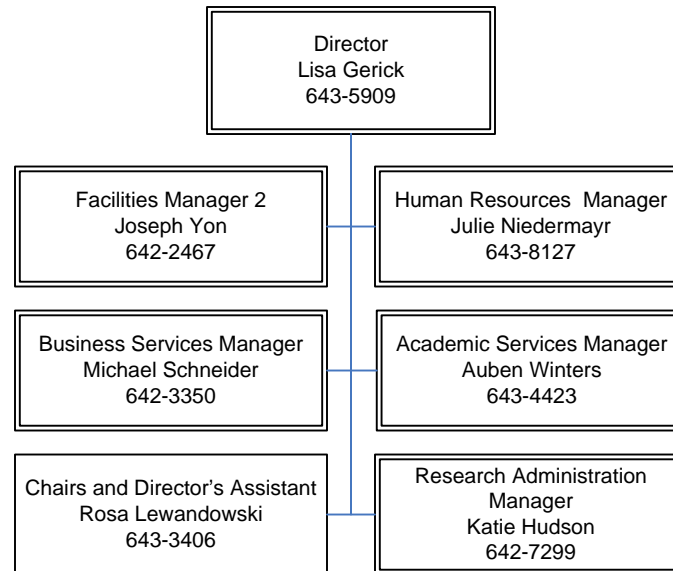


Biosciences Divisional Services Management and General Administration



December 2011

Academic Services

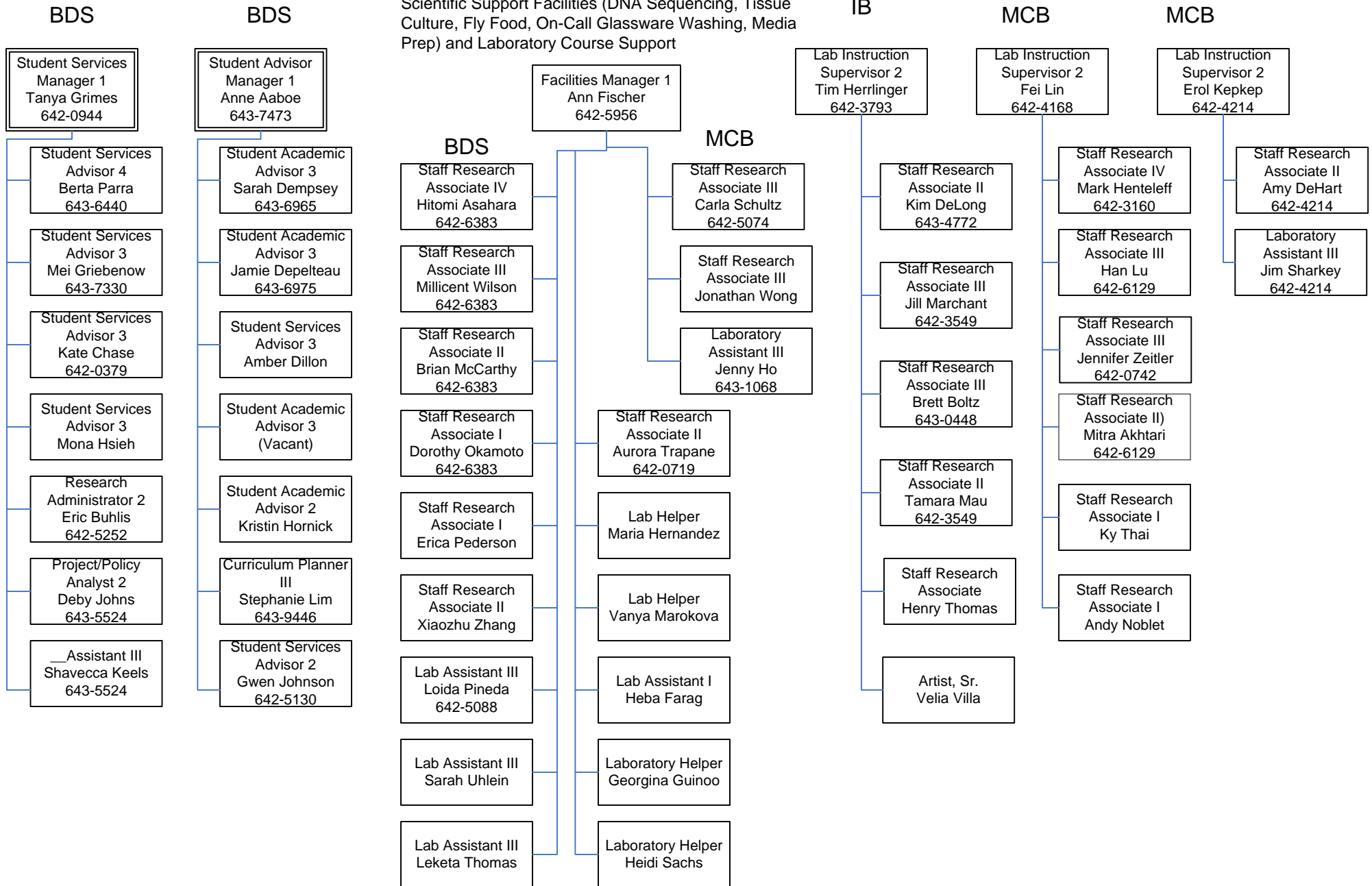
Graduate Student
and Seminar Support

Undergraduate Student
and Course Support

Laboratory Course Support

Manager
Auben Winters
643-4423

Scientific Support Facilities (DNA Sequencing, Tissue Culture, Fly Food, On-Call Glassware Washing, Media Prep) and Laboratory Course Support

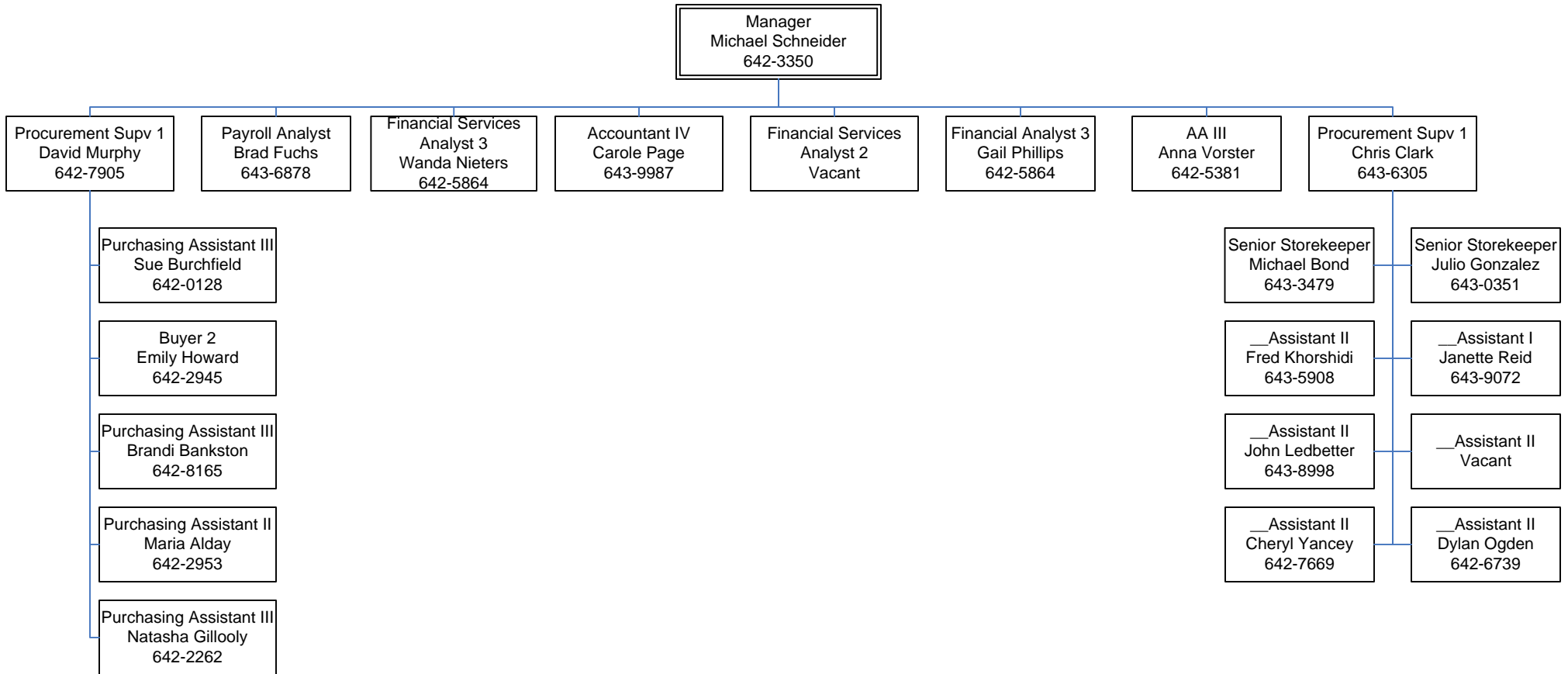


Biosciences Divisional Services Business Services

Purchasing, Travel & Entertainment

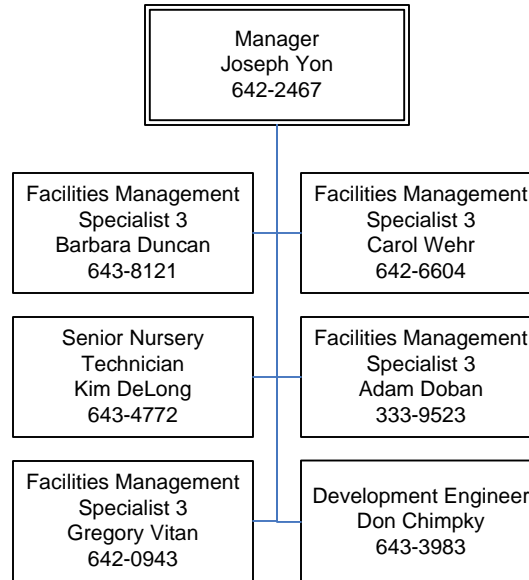
Departmental Accounting and Payroll

Stockrooms, Receiving, and Mail

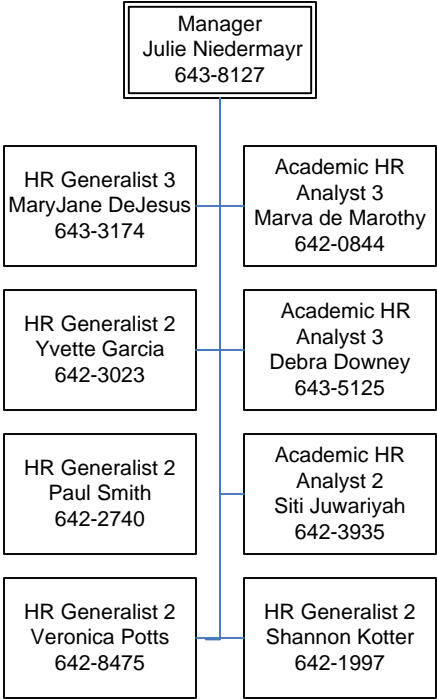


Biosciences Divisional Services
Building Operations and Research Support Facilities

Facilities Maintenance and
Research Equipment
Repair

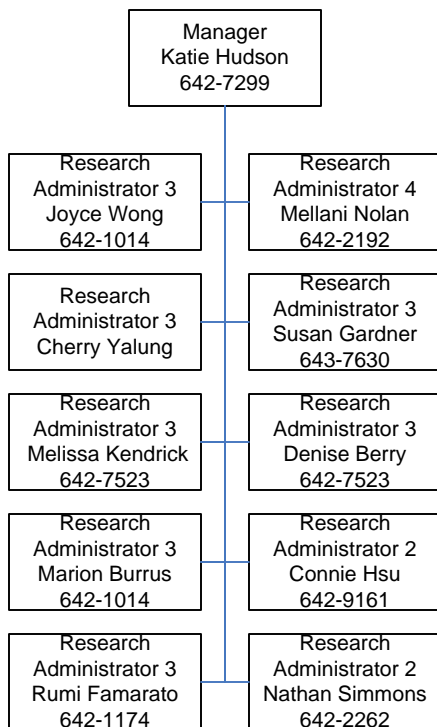


Biosciences Divisional Services
Human Resources



Biosciences Divisional Services
Research Administration

Research Administration and Extramural Funds



Biosciences Divisional Services
Technical Support Services

Support for Desktop (Mac,
PC and UNIX),
Networking, Website,
Database Maintenance,

