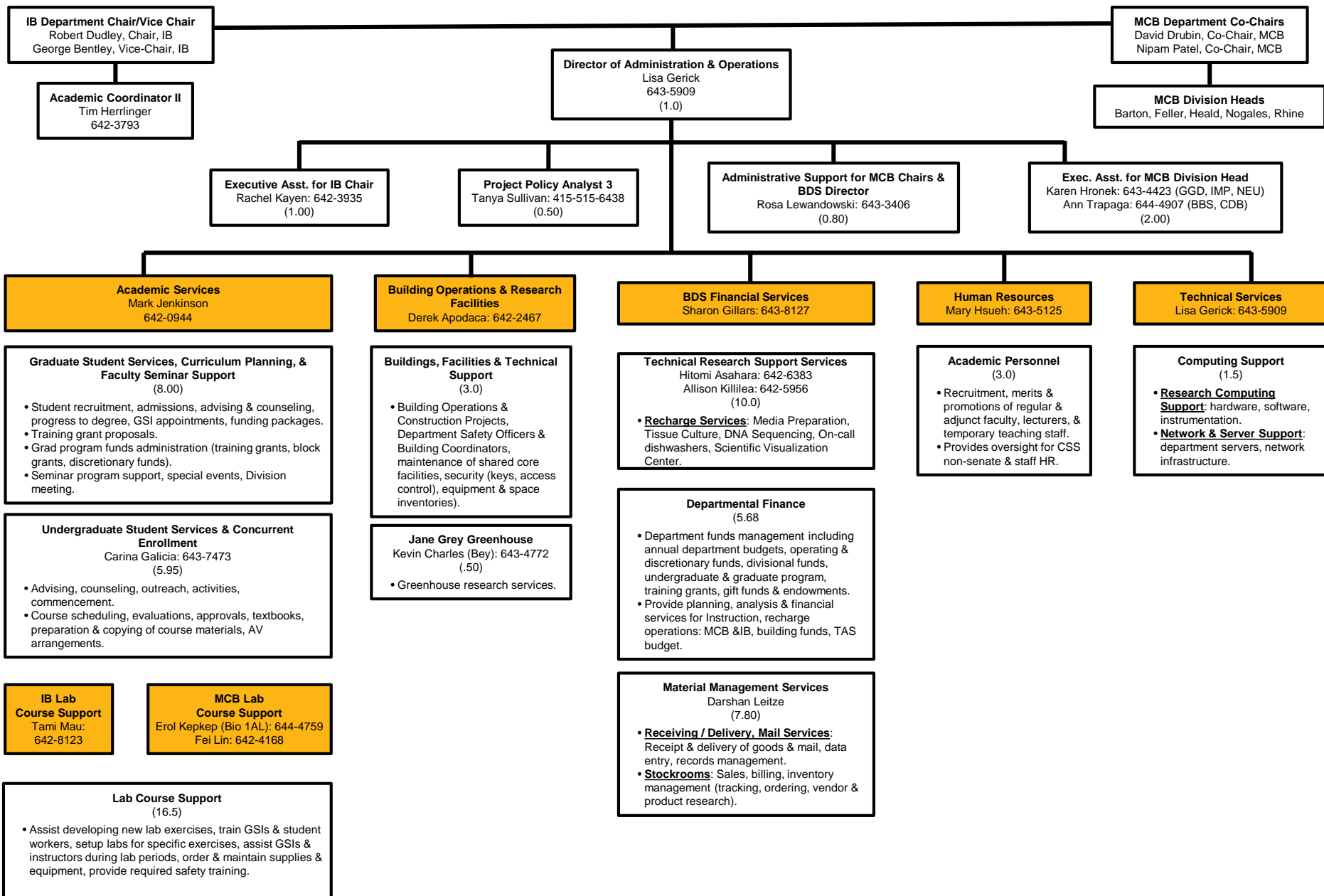
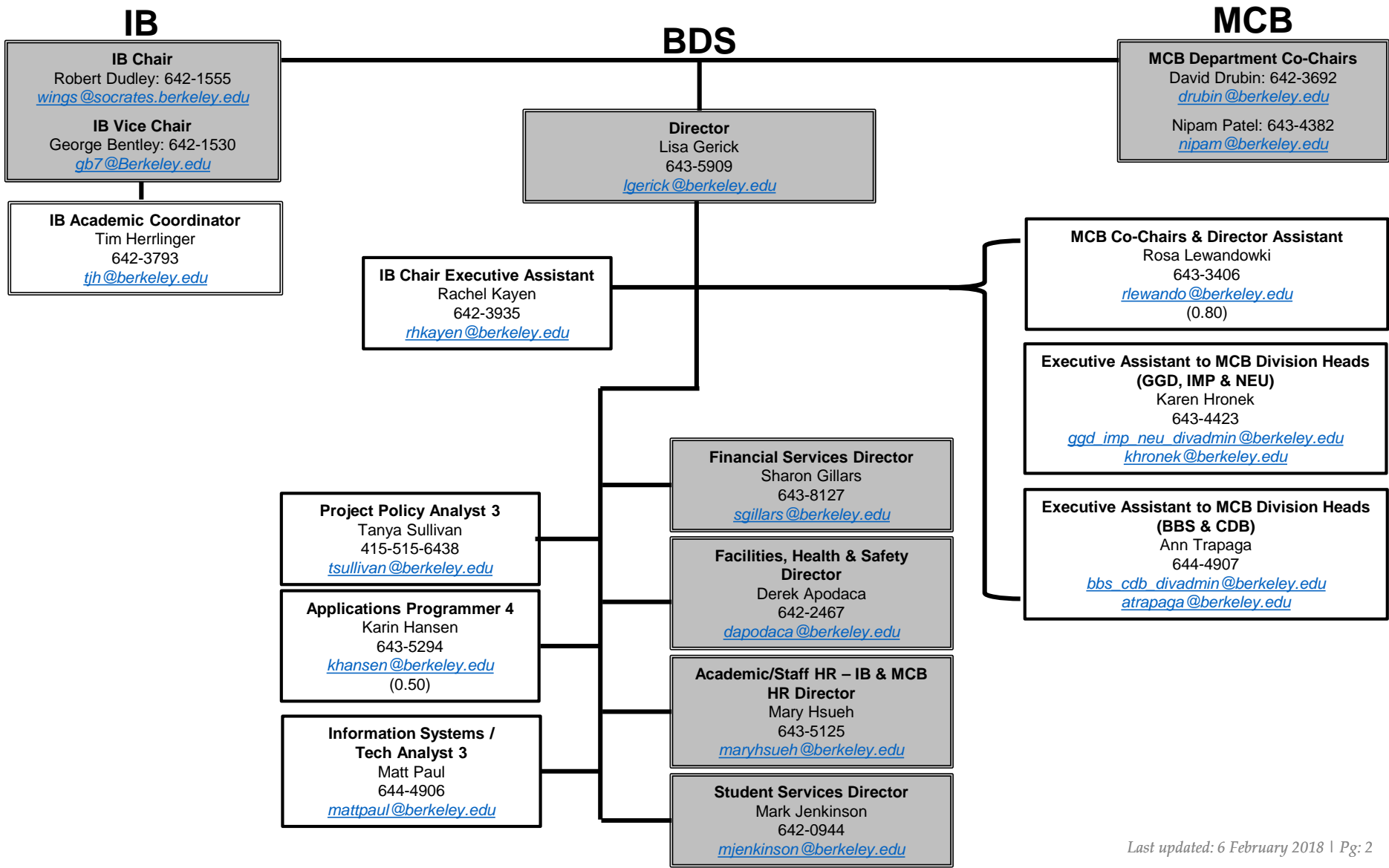


Biosciences Divisional Services: Organization of Functions



KEY
 Supervisor
 Position



Academic Student Services
 Biosciences Divisional Services (BDS)

KEY
 Supervisor
 Position

Director
 Lisa Gerick
 643-5909
lgerick@berkeley.edu

Student Services Director
 Mark Jenkinson
 642-0944
mjenkinson@berkeley.edu

IB Instructional Support
 Tami Mau
 642-8123

MCB Instructional Support
 Erol Kepkep: 644-4759
erol@Berkeley.edu
 Fei Lin: 642-4168
feilin@Berkeley.edu

Assistant Director of Student Services
 Carina Galicia
 643-7473
cgalicia@berkeley.edu

Graduate Student Services, Course
 Scheduling, Curriculum Planning &
 Faculty Seminar Support

IB & MCB Seminar Support
 Admin Assistant 3
 Shavecca Keels
 664-4904
shavecca@berkeley.edu

IB & MCB Seminar Support
 Project / Policy Analyst 2
 Deby Johns
 643-5524
djohns@berkeley.edu

IB Curriculum Planner 3
 Emerita Dela Cruz
 642-5130
emeritadc@berkeley.edu

MCB Curriculum Planner 3
 Maria Park
 643-9446
mariap@berkeley.edu

IB Student Services Advisor 3
 Korshid Tarin
 643-7330
ktarin@berkeley.edu

MCB Student Services Advisor 3
 Sarah Hamilton
 642-5252
sarahhamilton@berkeley.edu

MCB Research Administrator 2
 Eric Buhlis
 664-4905
er_buhlis@berkeley.edu

MCB Student Services Advisor 4
 Berta Parra
 643-6440
bparra@berkeley.edu

Undergraduate Student Services
 &
 Concurrent Enrollment

IB Student Academic Advisor 3
 Elvia Sornoza
 643-6983
esornoza@berkeley.edu

MCB Student Academic Advisor 3
 Clara Ng-Quinn
 643-6975
cngquinn@berkeley.edu

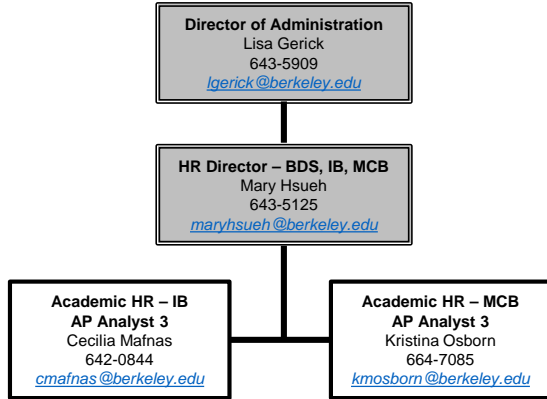
IB Student Academic Advisor 3
 Zachary Chestnut
 644-7012
zachestnut@berkeley.edu

MCB Student Academic Advisor 3
 Katie Carson
 643-6965
kcarson@berkeley.edu

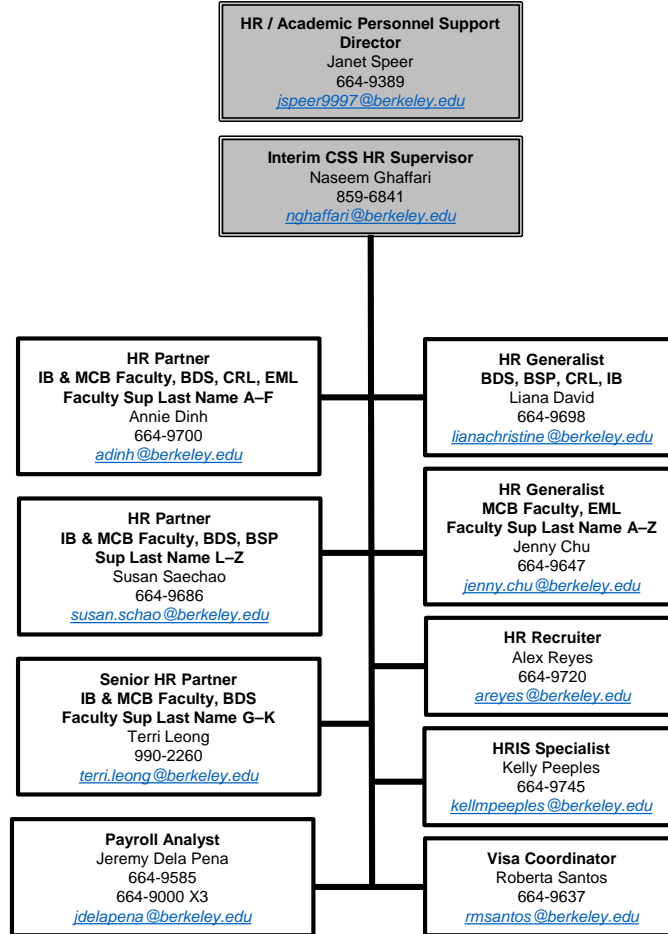
**BBSA (IB / MCB)
 Concurrent Enrollment
 Program Coordinator**
 Rhiannon Lewis
 643-7204
rplewis@berkeley.edu

**IB & MCB Student Academic
 Advisor 2**
Vacant
 643-8895 & 643-1667

BDS HR



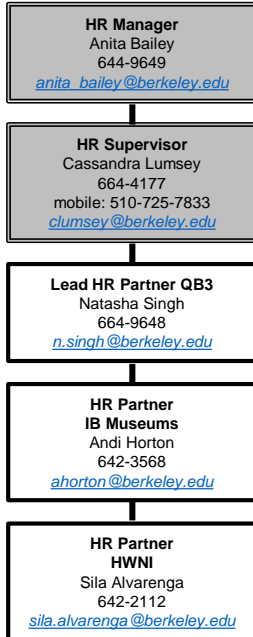
CSS TEAM 4
 Staff & Non-Senate Academic HR Support



- CSS TEAM 4**
- For Staff, Non-Senate Academics & Post-Docs, please contact:
 - Annie Dinh (HR Partner)
 - Susan Saechao (HR Partner)
 - Terri Leong (Sr. HR Partner)
 - For Undergrads, GSRs, GSIs, Readers, Tutors, DeCal Facilitators, Visiting Scholars & Volunteers, please contact:
 - Jenny Chu
 - Liana David
 - For Service Concerns & Escalation, please contact:
 - Mary Hsueh (BDS HR Director)
 - OR
 - Naseem Ghaffari Interim (CSS HR Supervisor)

CSS TEAM 9

Staff & Non-Senate Academic HR Support



- ACRONYM KEY**
- BDS = Biosciences Divisional Services
 - BSP = Biology Scholars Program
 - CRL = Cancer Research Lab
 - EML = Electron Microscope Lab
 - IB = Integrative Biology
 - MCB = Molecular & Cell Biology

KEY
 Supervisor
 Position

BDS Finance Unit

Director
 Lisa Gerick
 643-5909
lgerick@berkeley.edu

Financial Services Director
 Sharon Gillars
 643-8127
sgillars@berkeley.edu

BDS Financial Analyst 4
 Joe Magliaro
 423-0662
ajmagliaro@berkeley.edu
 (0.50)

IB / MCB Financial Services Analyst 2
 Adriana Trenado
 643-3174
frias@berkeley.edu
 (0.50)

IB Financial Analyst 3
 Gail Phillips
 642-5518
gep@berkeley.edu

MCB Financial Services Analyst 3
 Tanis Kidd
 644-7249
tkidd@berkeley.edu

IB / MCB Financial Analyst 3
 Jaime Turnbull-Dreher
 643-9987
jtdreher@berkeley.edu

MCB Financial Analyst 3
 Teresa Granados
 642-5864
teresa_granados@berkeley.edu

CSS TEAM 4 & 9

**Business & Financial Services
 Purchasing, Travel & Entertainment**

Campus Shared Services Chief Operating Officer
 Peggy Huston
 664-9299
phuston@berkeley.edu

Travel & Entertainment Supervisor
 Jadine Palapaz
 644-9286
jpalapaz@berkeley.edu

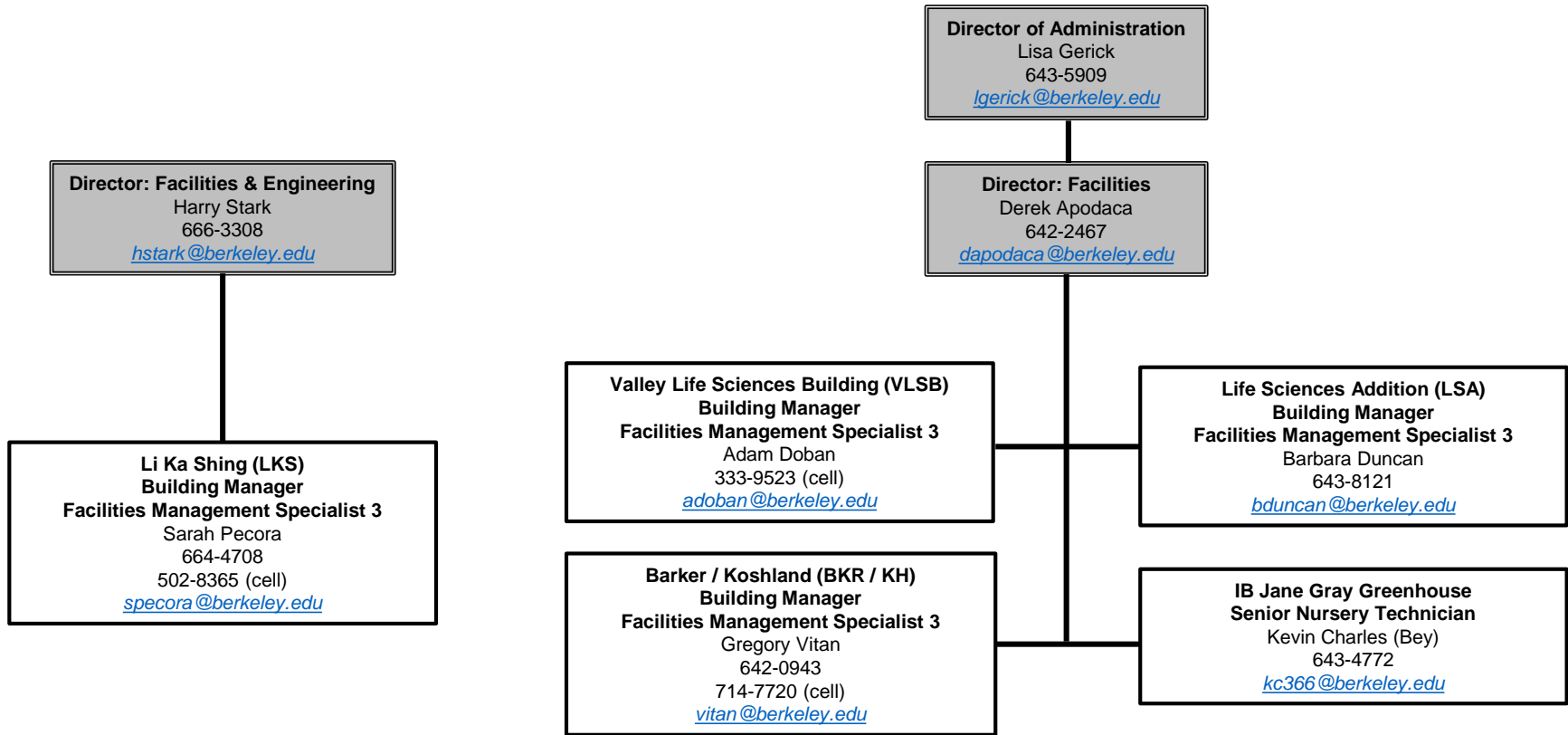
Purchasing Supervisor
 Robin Baca
 644-9290
rbaca@berkeley.edu

Travel & Entertainment Assistant Team 4
 Leaf Grenoble
 664-9469
leaf@berkeley.edu

Purchasing Analyst 3
 Albert Liu
 664-9385
aliu0110@berkeley.edu

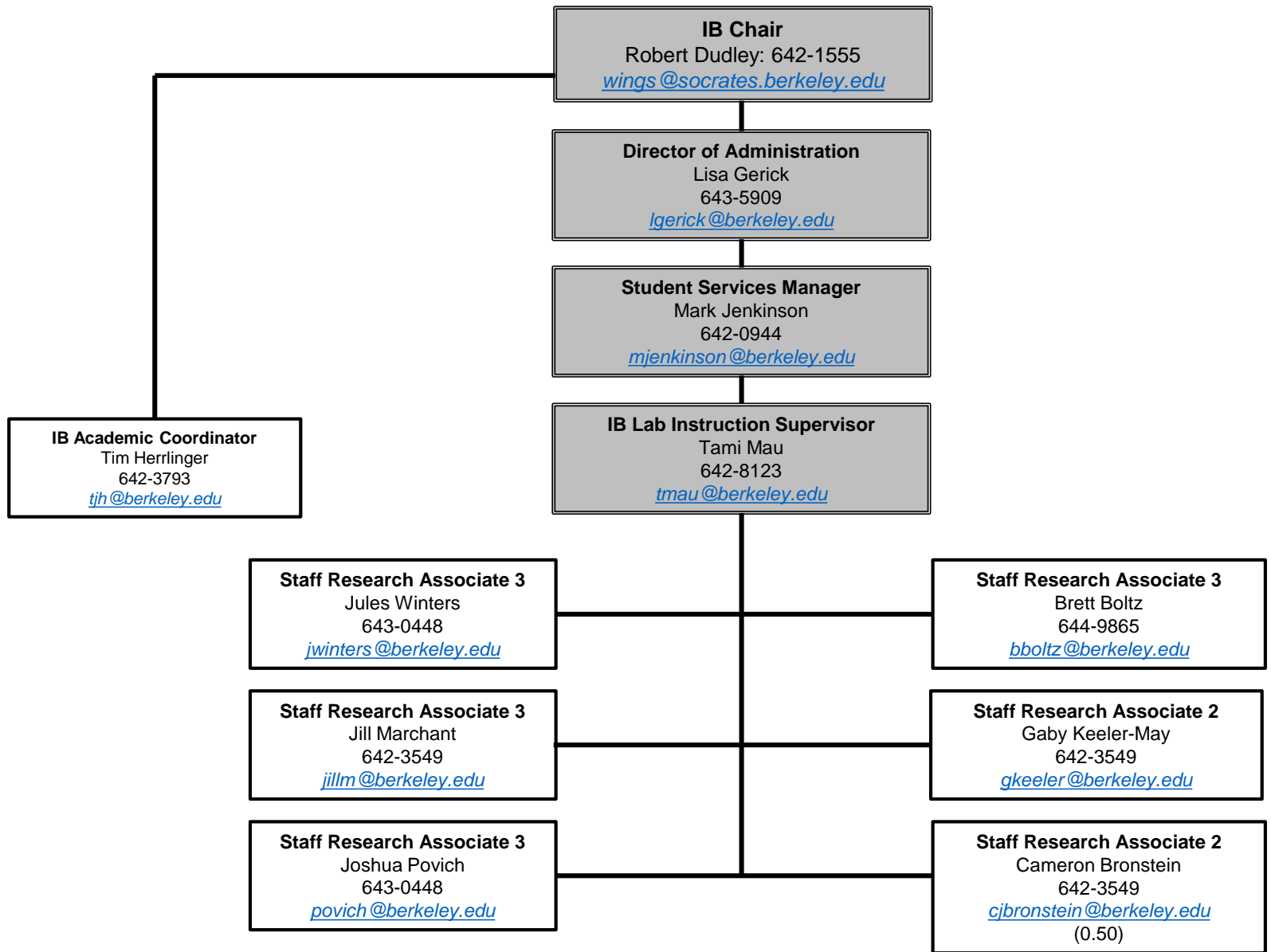
Travel & Entertainment Assistant Team 9
 Liway Martinez
 664-9570
liwaym@berkeley.edu

Purchasing Assistant
 Sue Burchfield
 664-9564
sburch@berkeley.edu



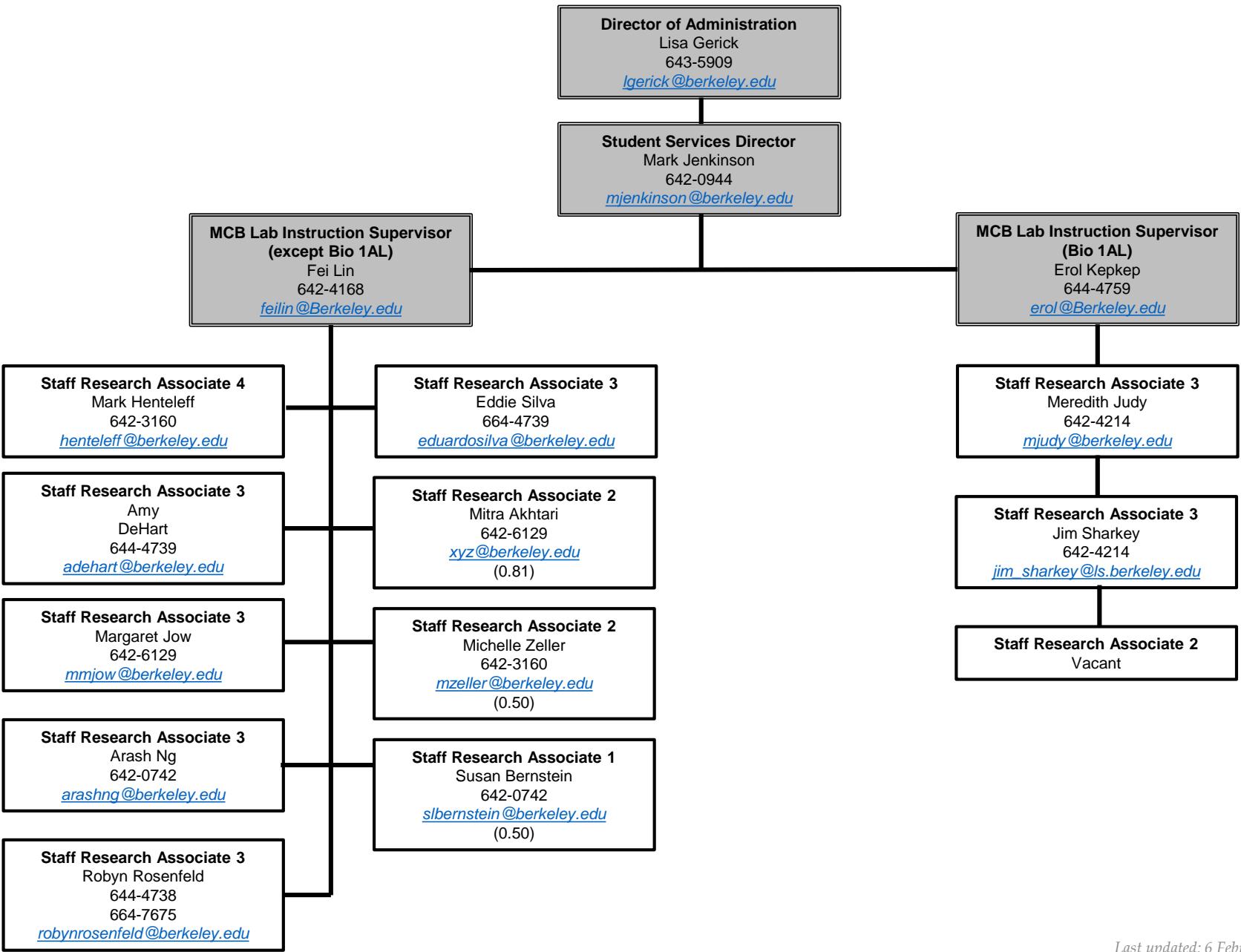
Laboratory Course Support
Integrative Biology (IB)

KEY
Supervisor
Position

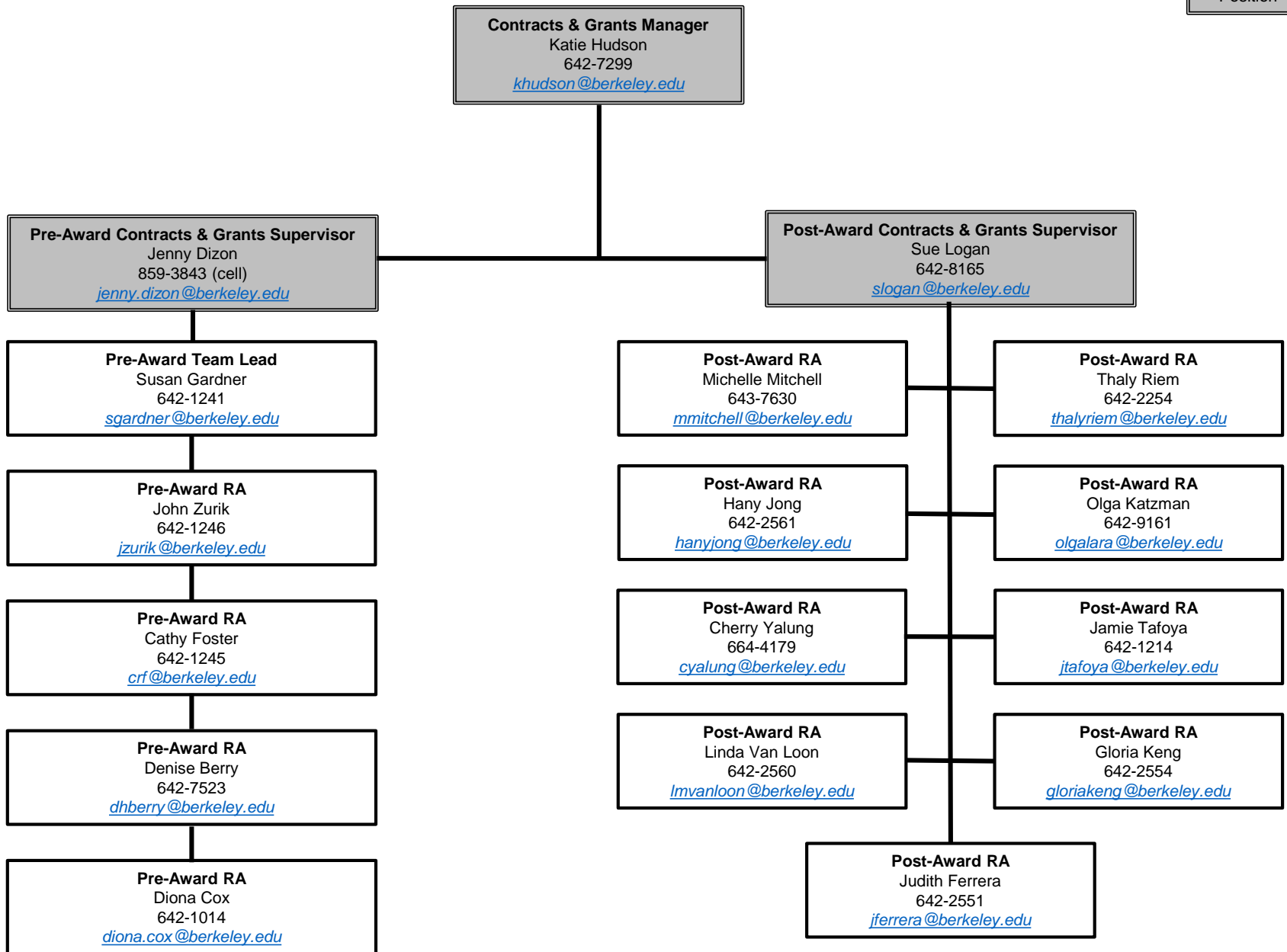


Laboratory Course Support
Molecular & Cell Biology (MCB)

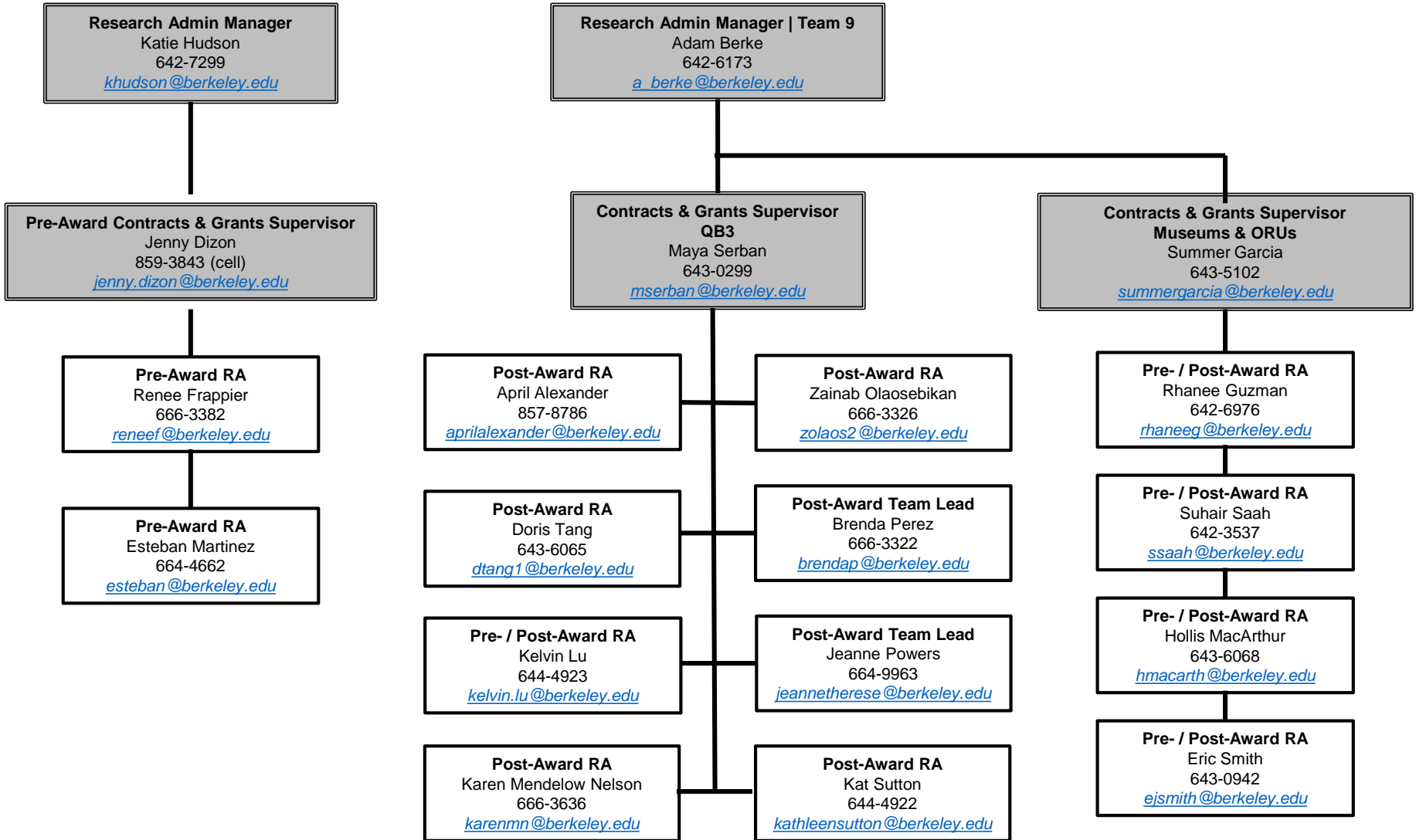
KEY
Supervisor
Position



KEY
Supervisor
Position

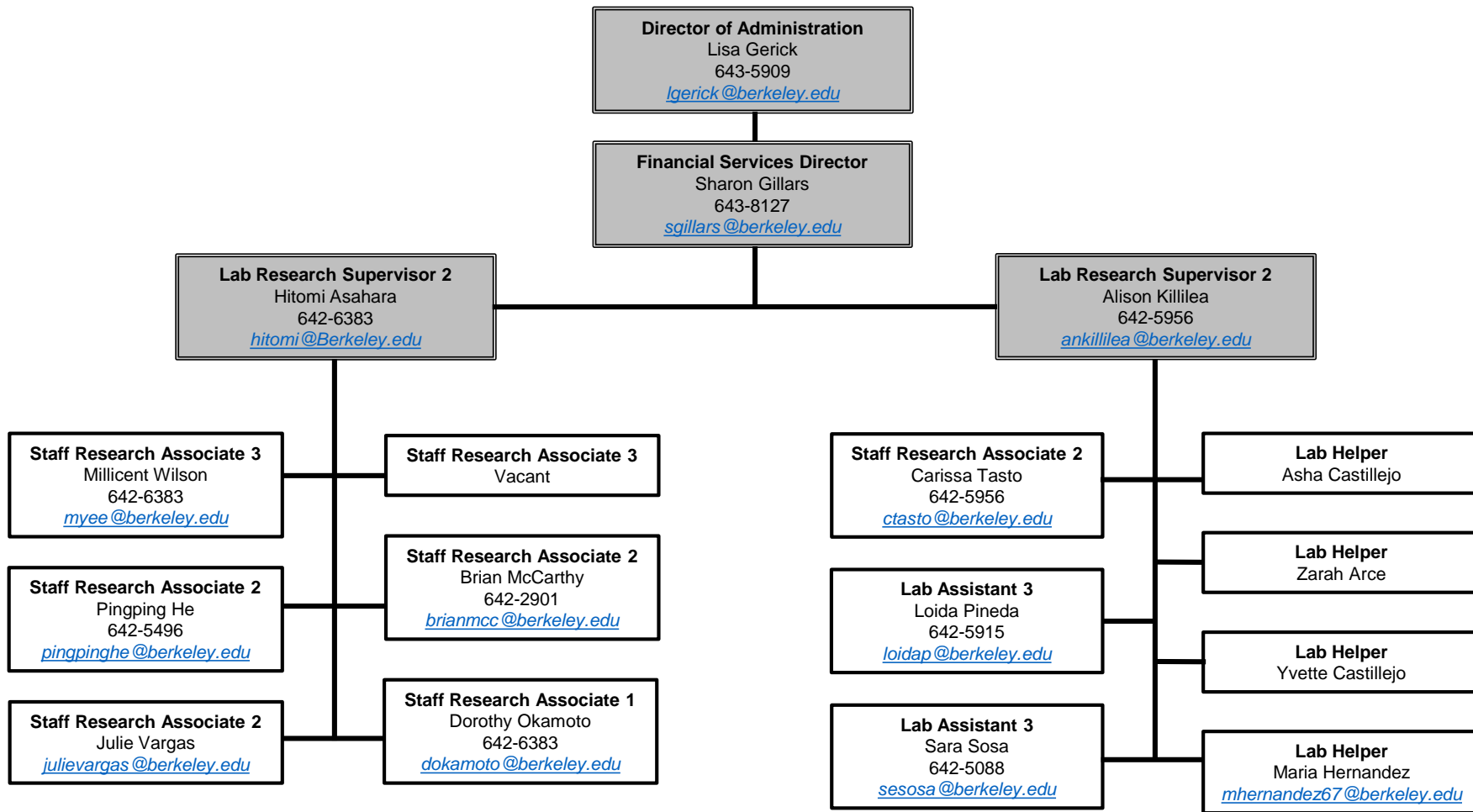


KEY
Supervisor
Position



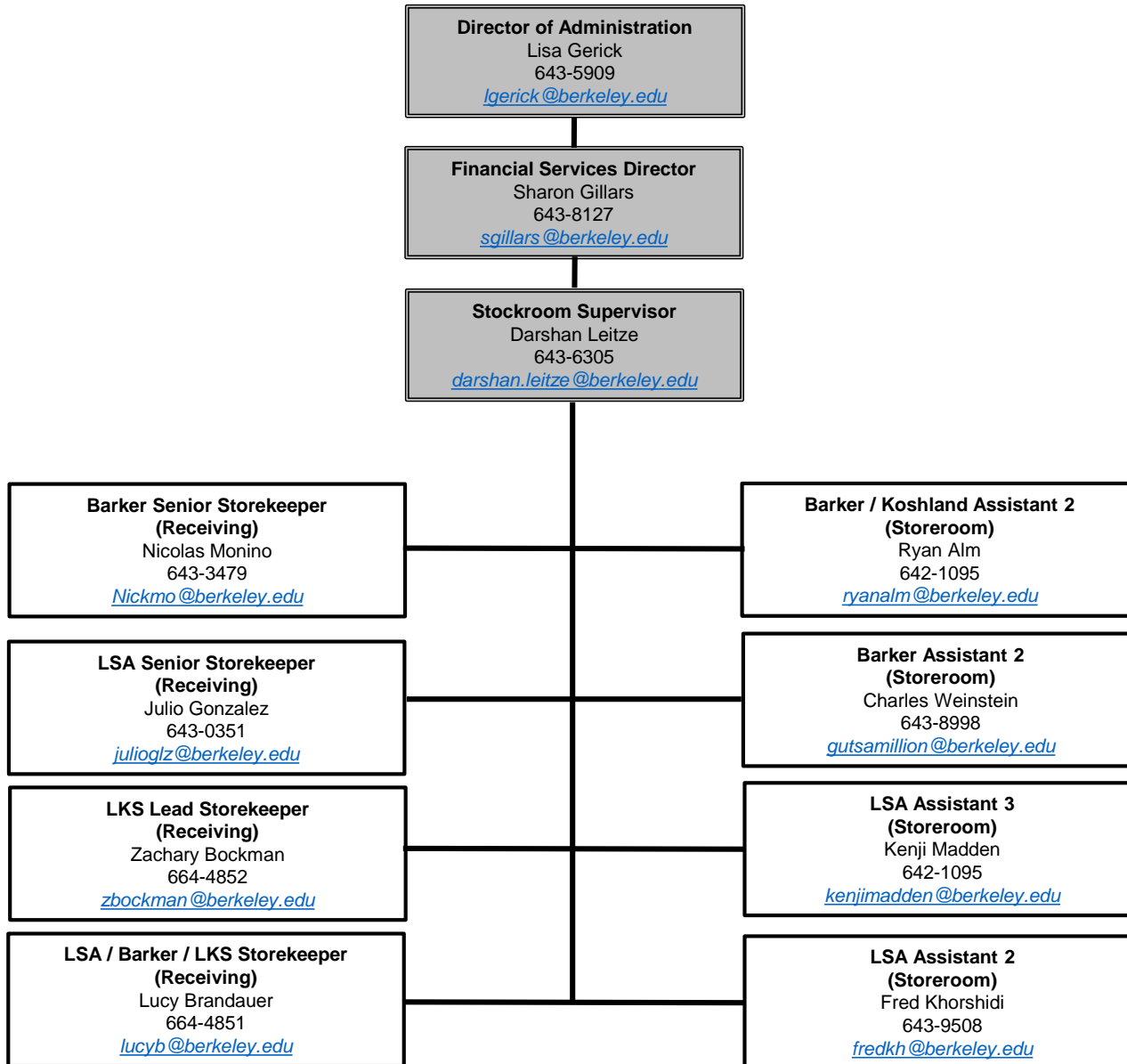
Scientific Support Facilities
 (DNA Sequencing, Tissue Culture, Fly Food, On-Call Glassware Washing, Media Prep & Laboratory Course Support)
 Molecular & Cell Biology (MCB)

KEY
Supervisor
Position



Stockroom, Receiving & Mail
Biosciences Divisional Services (BDS)

KEY
Supervisor
Position



BDS

Director of Administration
 Lisa Gerick
 643-5909
lgerick@berkeley.edu

Applications Programmer 4
 Karin Hansen
 643-5294
khansen@berkeley.edu
 (0.50)

Information Systems / Tech Analyst 3
 Matt Paul
 643-5294
mattpaul@berkeley.edu

CSS TEAM 4 IT

CSS IT Director
 Jerry Yerardi
 664-9259
yerardijerry@berkeley.edu

CSS IT Deputy Director
 Kyle Pope
 664-9260
kyle.pope@berkeley.edu

Service Desk Supervisor
 Sally Baker
 664-9233
sally.baker@berkeley.edu

Field Team Supervisor
 Noah McGee
 725-1379
nkmcgee@berkeley.edu

Service Desk Technicians
 664-9000 option 1
itcsshelp@berkeley.edu

Darrell Adler
 Carol Chapman
 Eric Fong
 Charles Heinz
 David Holt
 David Lee
 Theo Mak
 Melaniece Parker
 Donson Toy
 Aaron Turner
 John Valmores
 Toni Ward

Field Technicians
 664-9000 option 1
itcsshelp@berkeley.edu

Calvin Burnes
 Michelle Dunlevy
 Roger Emond
 Paul Garnett
 JJ Howard
 Ben Kaaya
 Brett Larson
 Eric Maddy
 Dustin Miller
 Larry Peng
 Carl Petroff
 Vivian Sophia
 Jason Trout