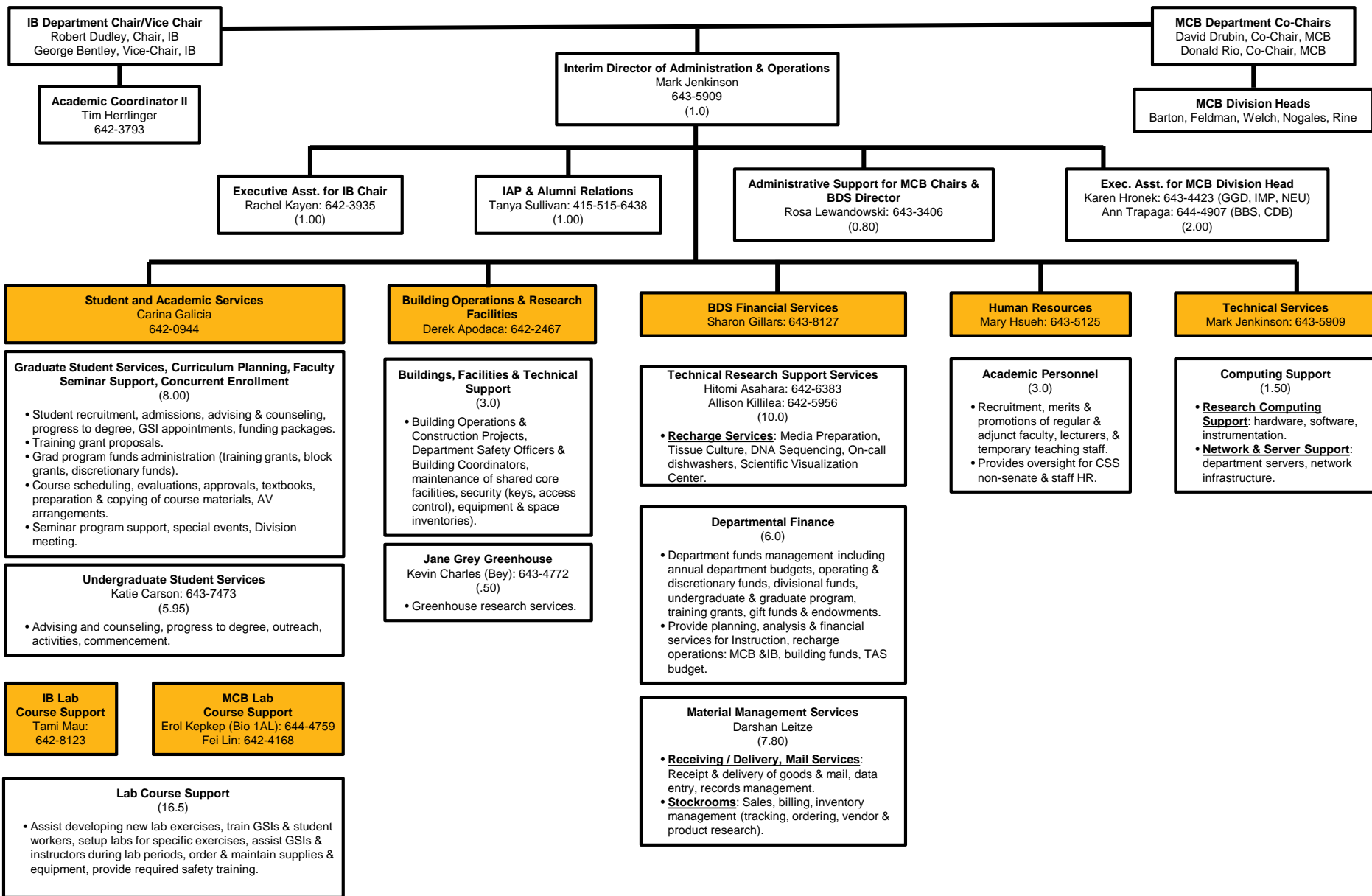
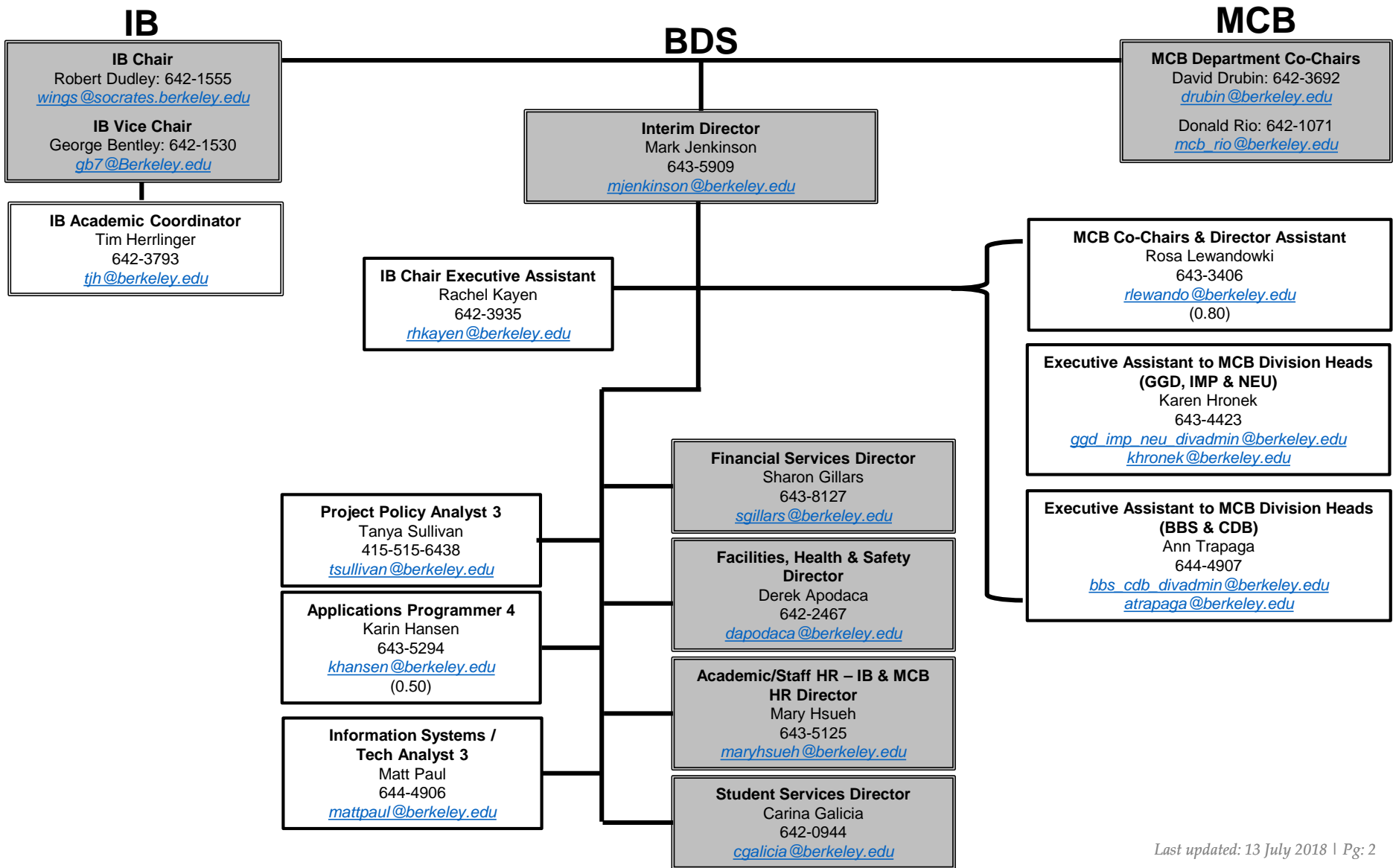


Biosciences Divisional Services: Organization of Functions

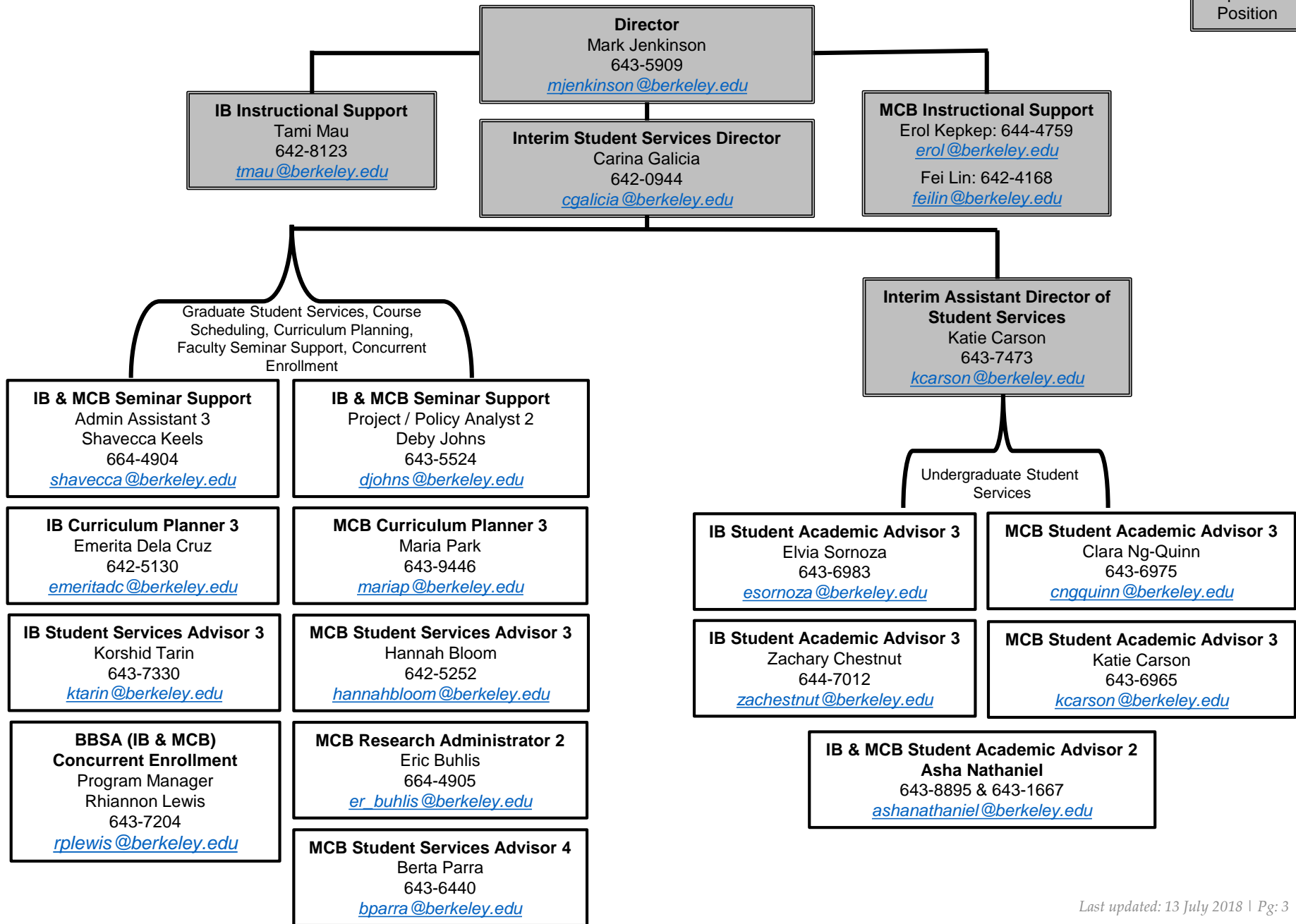


KEY
 Supervisor
 Position

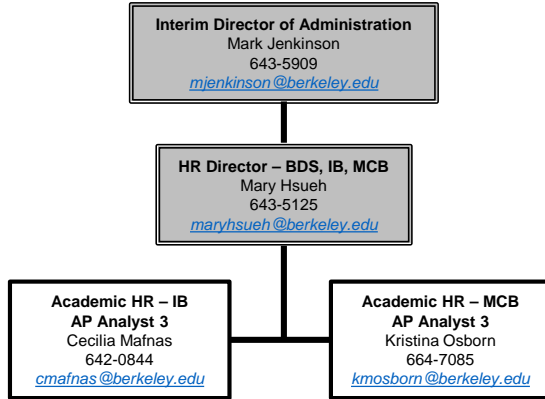


Academic Student Services
 Biosciences Divisional Services (BDS)

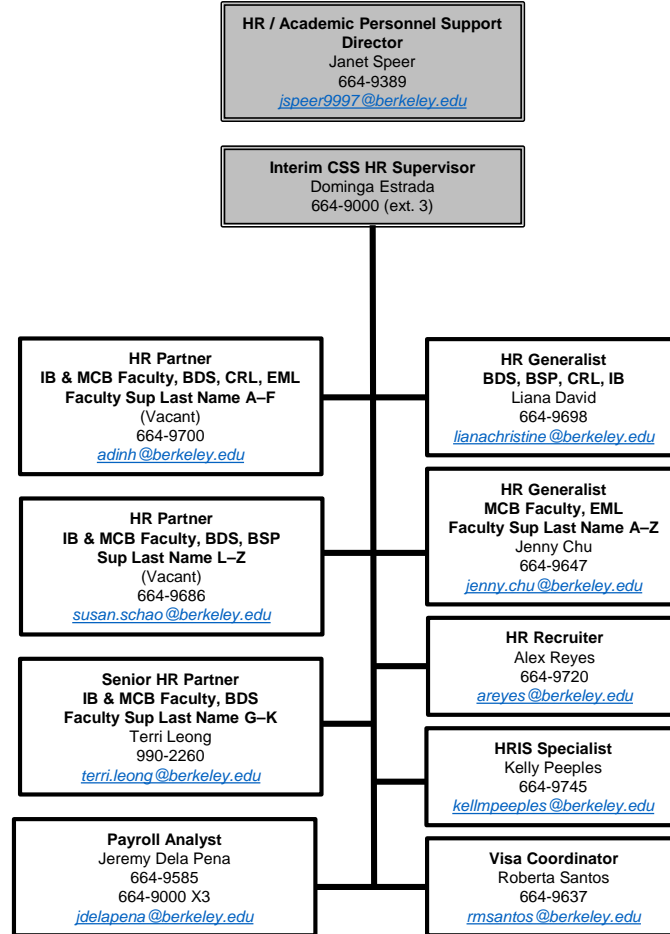
KEY
 Supervisor
 Position



BDS HR



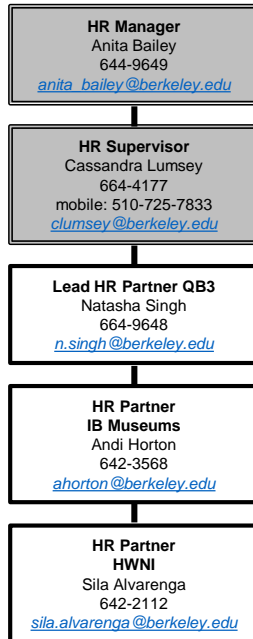
CSS TEAM 4
 Staff & Non-Senate Academic HR Support



- CSS TEAM 4**
- For Staff, Non-Senate Academics & Post-Docs, please contact:
 - Terri Leong (Sr. HR Partner)
 - For Undergrads, GSRs, GSIs, Readers, Tutors, DeCal Facilitators, Visiting Scholars & Volunteers, please contact:
 - Jenny Chu
 - Liana David
 - For Service Concerns & Escalation, please contact:
 - Mary Hsueh (BDS HR Director)
 - OR
 - Dominga Estrada (CSS HR Supervisor)

CSS TEAM 9

Staff & Non-Senate Academic HR Support



- ACRONYM KEY**
- BDS = Biosciences Divisional Services
 - BSP = Biology Scholars Program
 - CRL = Cancer Research Lab
 - EML = Electron Microscope Lab
 - IB = Integrative Biology
 - MCB = Molecular & Cell Biology

KEY
Supervisor
Position

BDS Finance Unit

Interim Director
Mark Jenkinson
643-5909
mjenkinson@berkeley.edu

Financial Services Director
Sharon Gillars
643-8127
sgillars@berkeley.edu

BDS Financial Analyst 4
Joe Magliaro
423-0662
ajmagliaro@berkeley.edu
(0.50)

IB / MCB Financial Services Analyst 2
Adriana Trenado
643-3174
frias@berkeley.edu
(0.50)

IB Financial Analyst 3
(Vacant)
642-5518

MCB Financial Services Analyst 3
Tanis Kidd
644-7249
tkidd@berkeley.edu

IB / MCB Financial Analyst 3
Jaime Turnbull-Dreher
643-9987
jtdreher@berkeley.edu

MCB Financial Analyst 3
Teresa Granados
642-5864
teresa_granados@berkeley.edu

CSS TEAM 4 & 9

Business & Financial Services Purchasing, Travel & Entertainment

Campus Shared Services Chief Operating Officer
Peggy Huston
664-9299
phuston@berkeley.edu

Travel & Entertainment Supervisor
(Vacant)
644-9286

Purchasing Supervisor
(Vacant)
644-9290

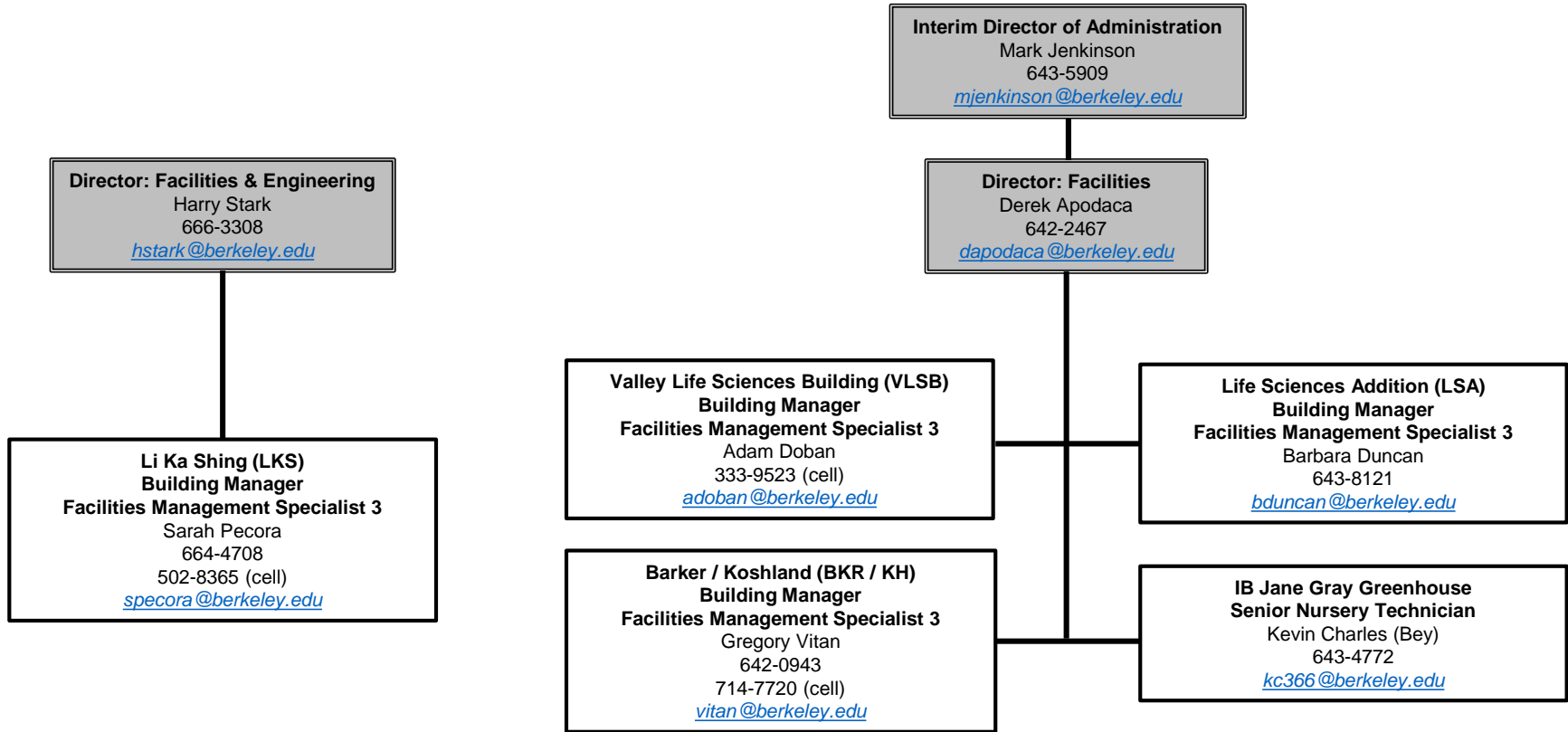
Travel & Entertainment Assistant Team 4
Leaf Grenoble
664-9469
leaf@berkeley.edu

Purchasing Analyst 3
Albert Liu
664-9385
aliu0110@berkeley.edu

Travel & Entertainment Assistant Team 9
Liway Martinez
664-9570
liwaym@berkeley.edu

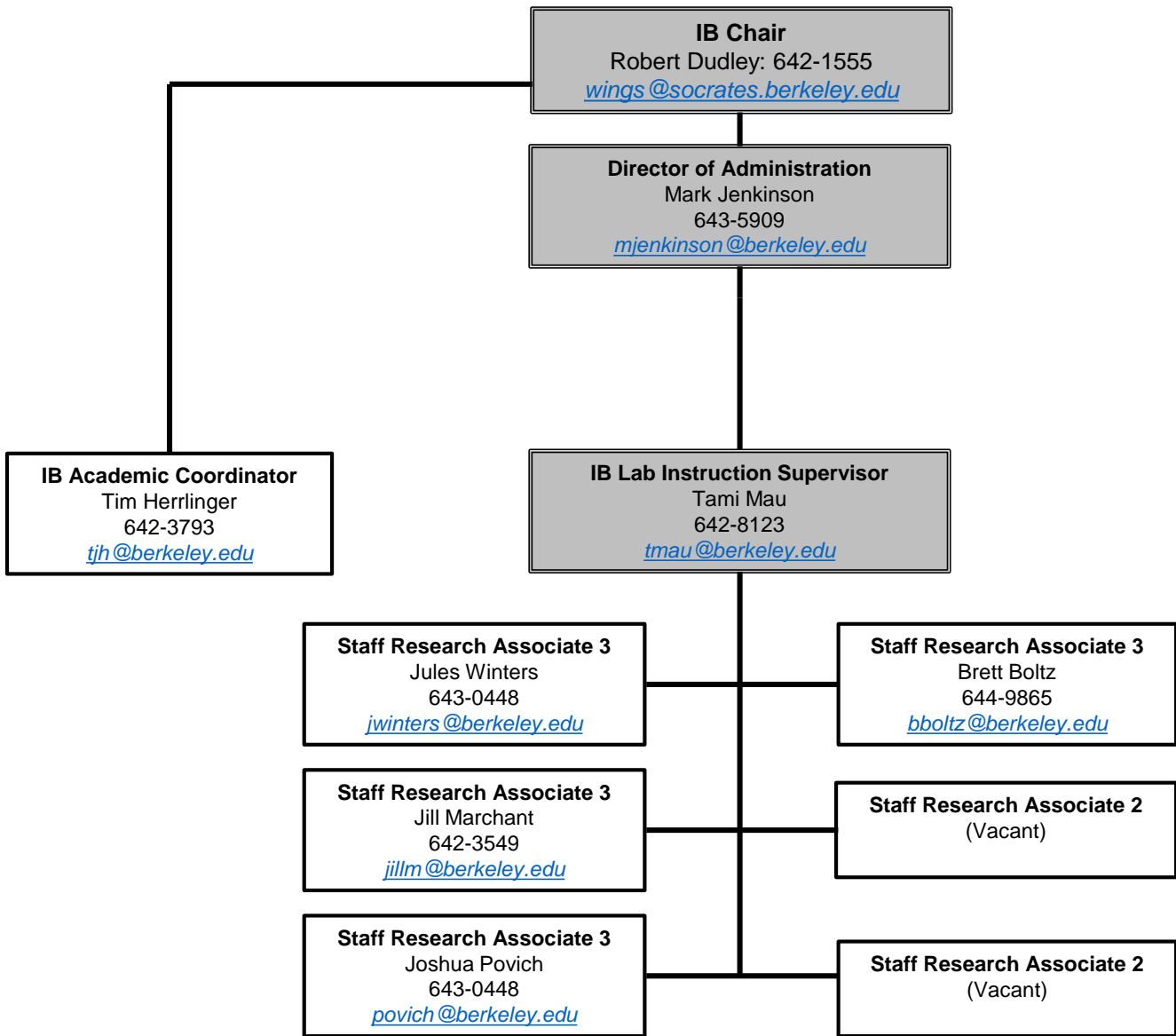
Purchasing Assistant
Sue Burchfield
664-9564
sburch@berkeley.edu

KEY
Supervisor
Position



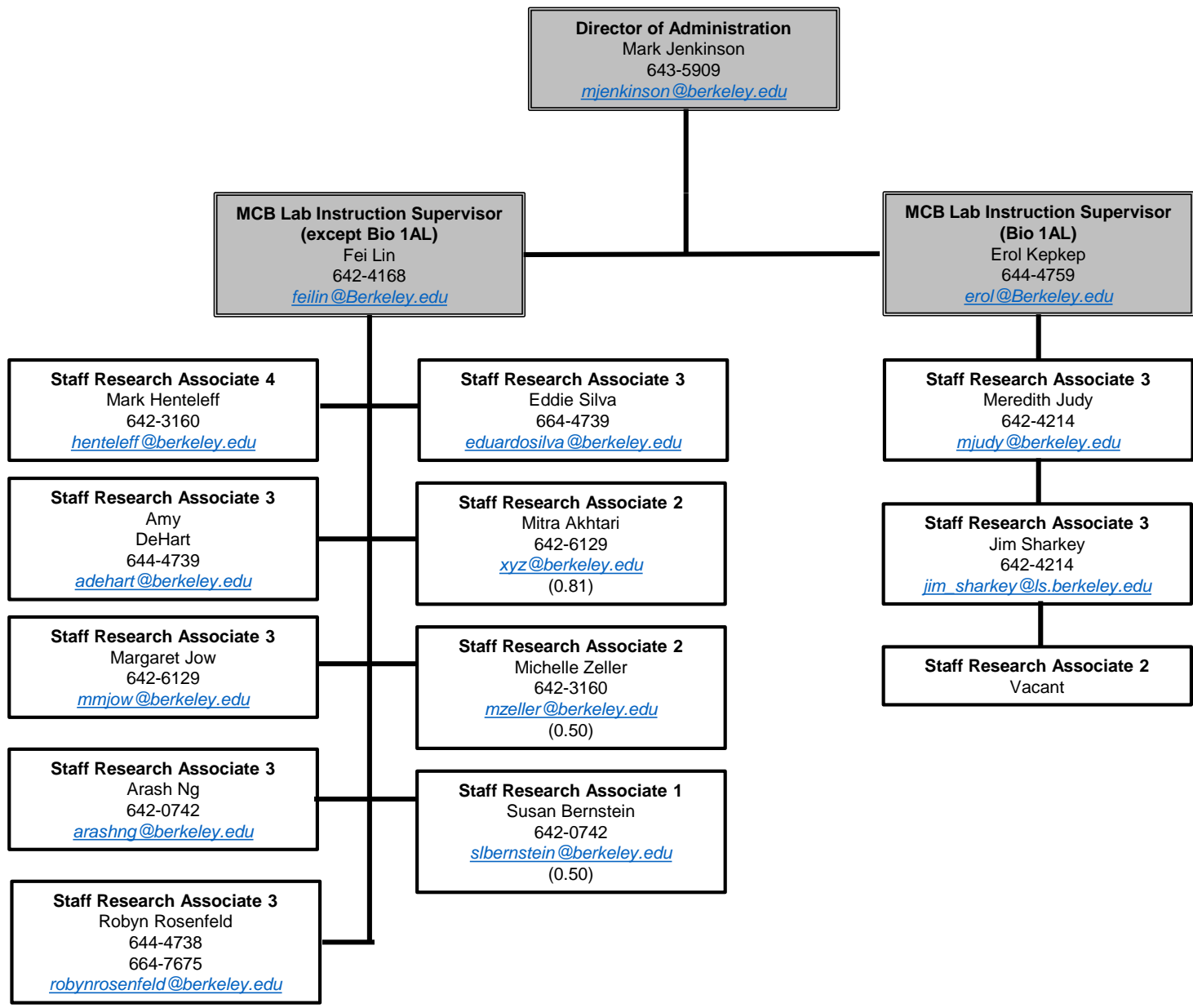
Laboratory Course Support
Integrative Biology (IB)

KEY
Supervisor
Position

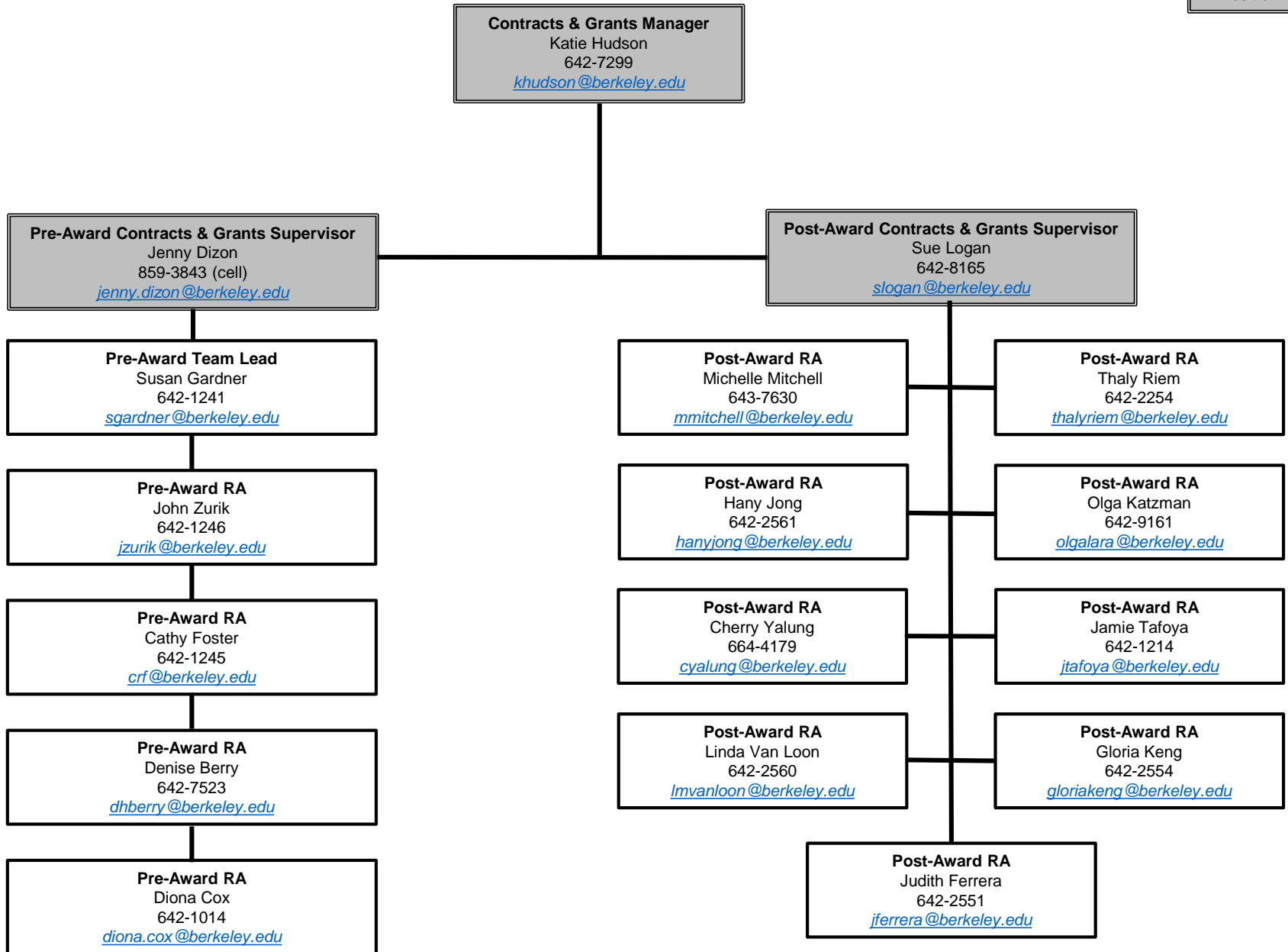


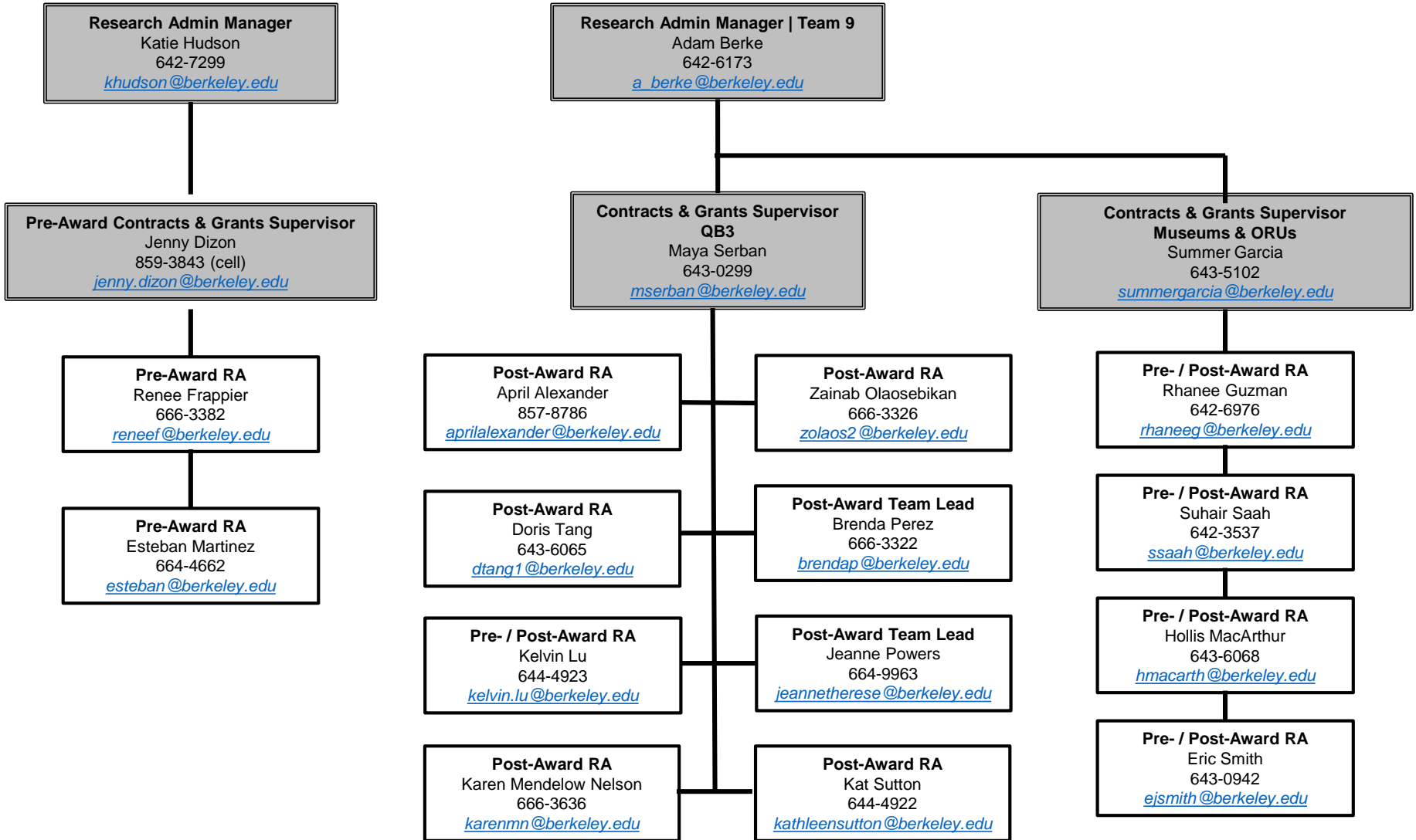
Laboratory Course Support
Molecular & Cell Biology (MCB)

KEY
Supervisor
Position



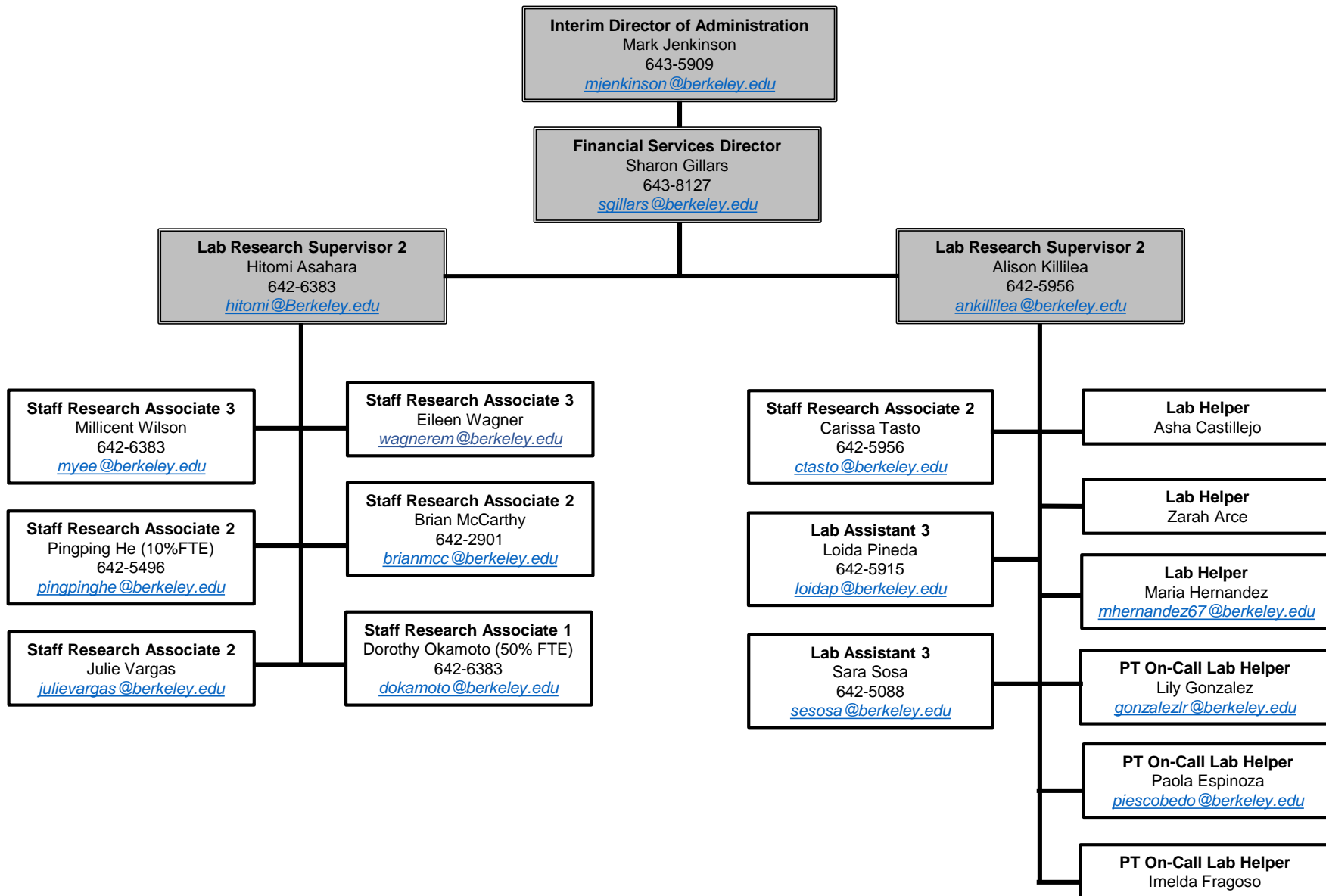
KEY
Supervisor
Position





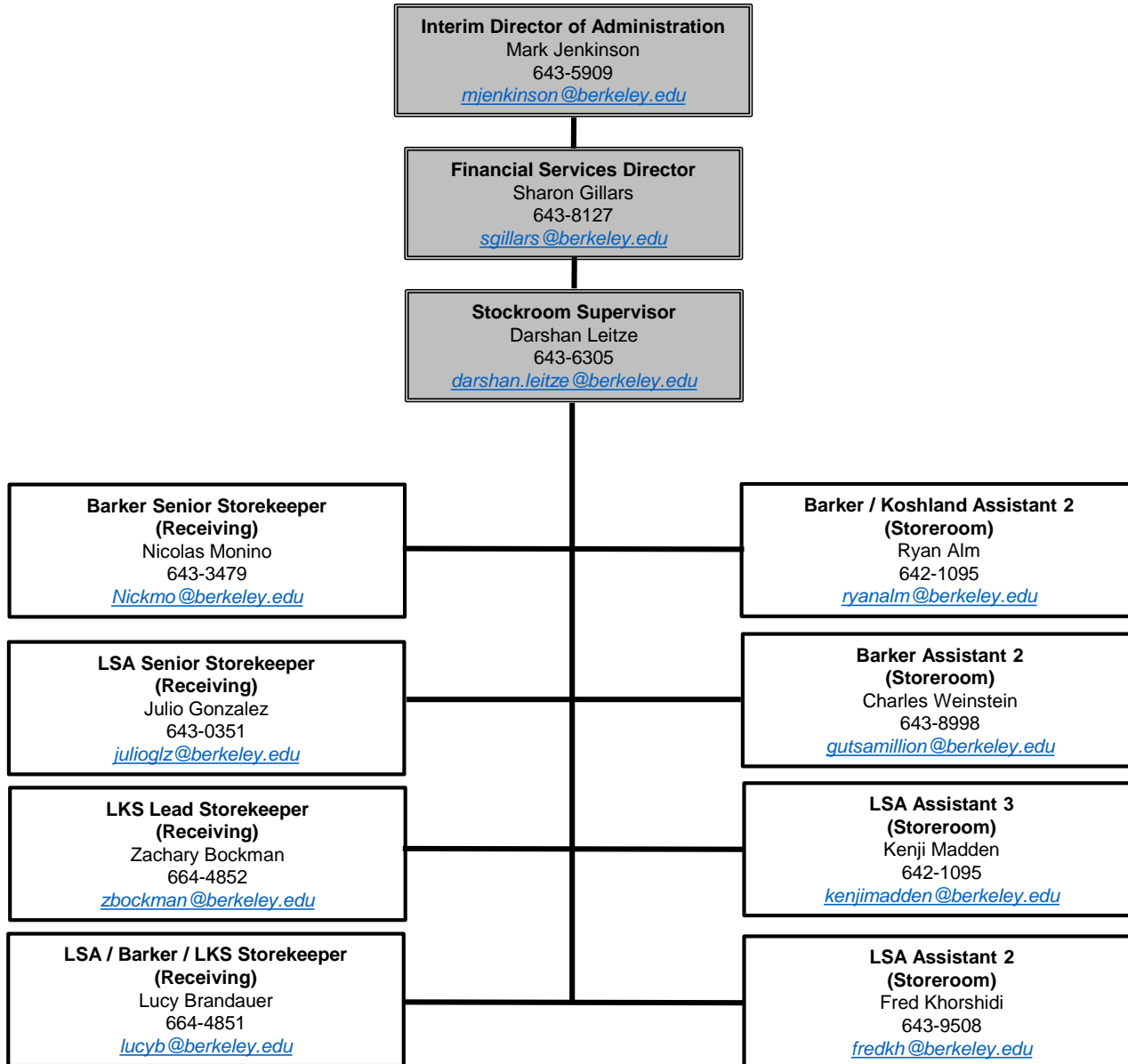
*Scientific Support Facilities
(DNA Sequencing, Tissue Culture, Fly Food, On-Call Glassware Washing, Media Prep & Laboratory Course Support)
Molecular & Cell Biology (MCB)*

KEY
Supervisor
Position



Stockroom, Receiving & Mail
Biosciences Divisional Services (BDS)

KEY
Supervisor
Position



BDS

Interim Director of Administration
 Mark Jenkinson
 643-5909
mjenkinson@berkeley.edu

Applications Programmer 4
 Karin Hansen
 643-5294
khansen@berkeley.edu
 (0.50)

Information Systems / Tech Analyst 3
 Matt Paul
 643-5294
mattpaul@berkeley.edu

CSS TEAM 4 IT

CSS IT Director
 Jerry Yerardi
 664-9259
yerardijerry@berkeley.edu

CSS IT Deputy Director
 Kyle Pope
 664-9260
kyle.pope@berkeley.edu

Service Desk Supervisor
 Sally Baker
 664-9233
sally.baker@berkeley.edu

Field Team Supervisor
 Noah McGee
 725-1379
nkmcgee@berkeley.edu

Service Desk Technicians
 664-9000 option 1
itcsshelp@berkeley.edu

Darrell Adler
 Carol Chapman
 Eric Fong
 Charles Heinz
 David Holt
 David Lee
 Theo Mak
 Melaniece Parker
 Donson Toy
 Aaron Turner
 John Valmores
 Toni Ward

Field Technicians
 664-9000 option 1
itcsshelp@berkeley.edu

Calvin Burnes
 Michelle Dunlevy
 Roger Emond
 Paul Garnett
 JJ Howard
 Ben Kaaya
 Brett Larson
 Eric Maddy
 Dustin Miller
 Larry Peng
 Carl Petroff
 Vivian Sophia
 Jason Trout