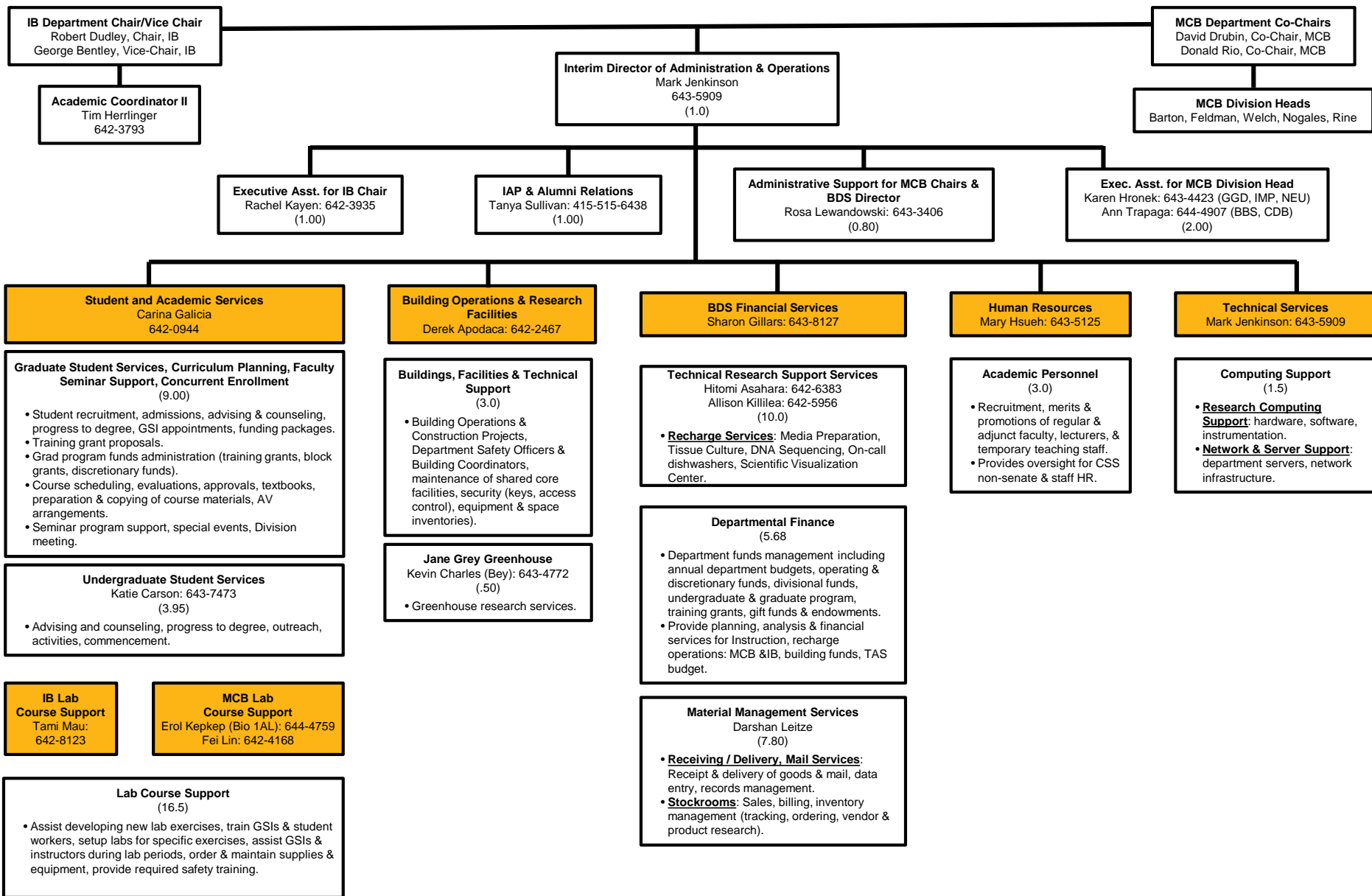
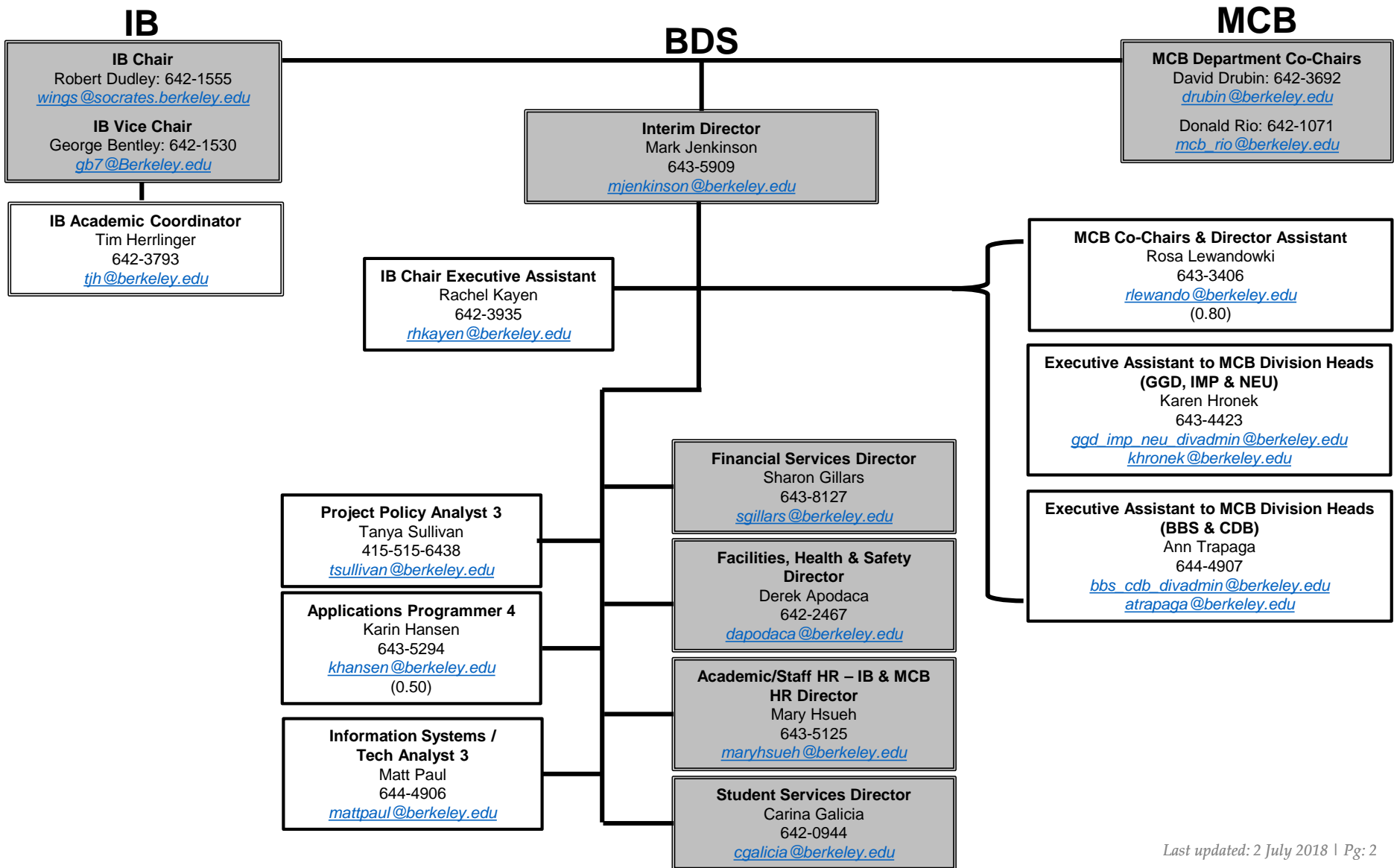


Biosciences Divisional Services: Organization of Functions

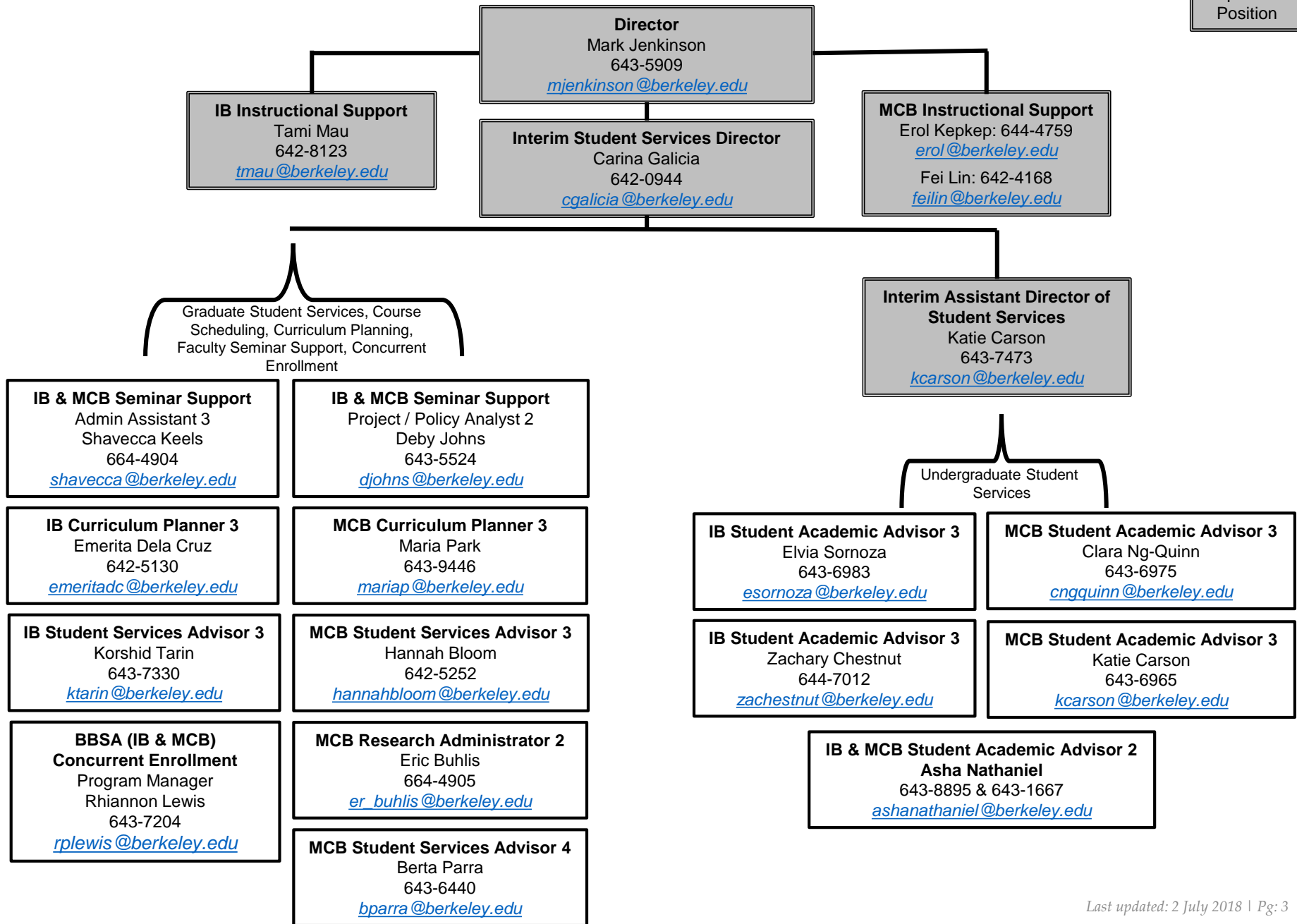


KEY
 Supervisor
 Position

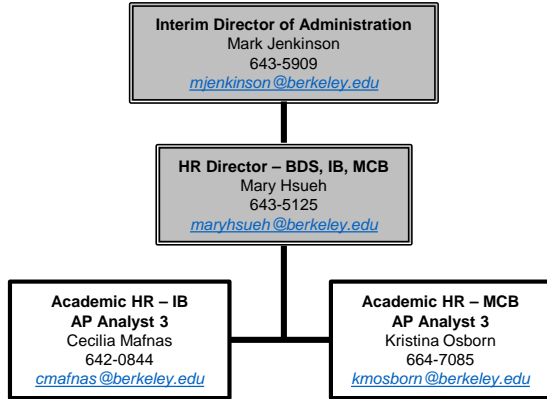


Academic Student Services
 Biosciences Divisional Services (BDS)

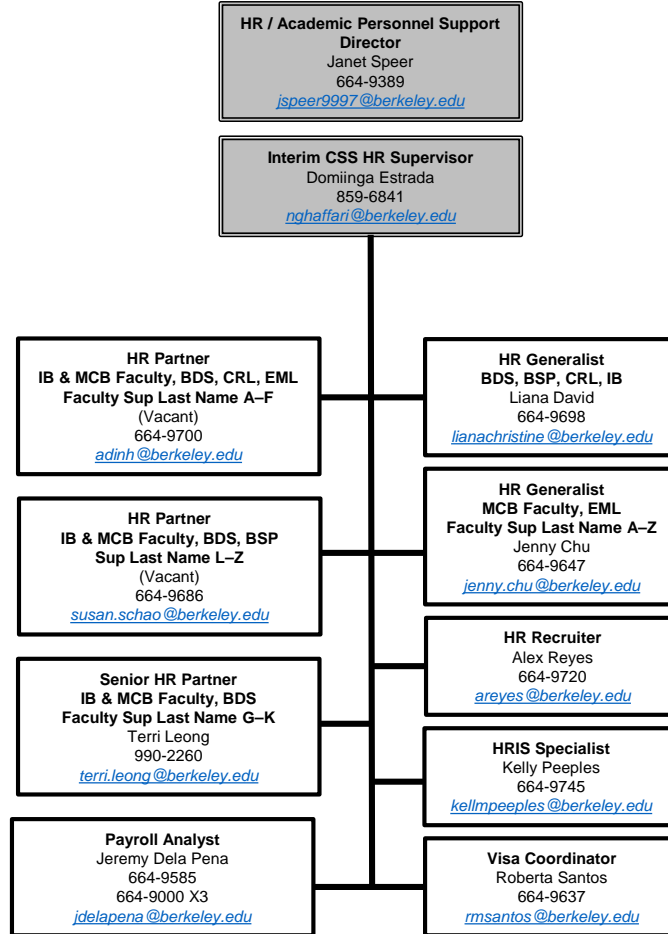
KEY
 Supervisor
 Position



BDS HR



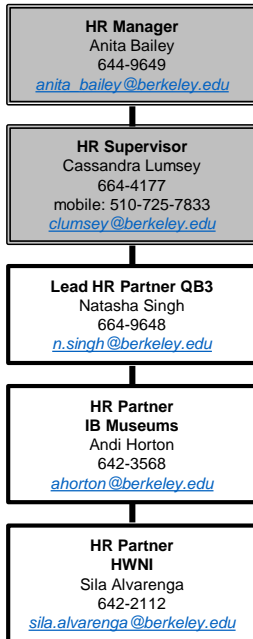
CSS TEAM 4
 Staff & Non-Senate Academic HR Support



- CSS TEAM 4**
- For Staff, Non-Senate Academics & Post-Docs, please contact:
 - Annie Dinh (HR Partner)
 - Susan Saechao (HR Partner)
 - Terri Leong (Sr. HR Partner)
 - For Undergrads, GSRs, GSIs, Readers, Tutors, DeCal Facilitators, Visiting Scholars & Volunteers, please contact:
 - Jenny Chu
 - Liana David
 - For Service Concerns & Escalation, please contact:
 - Mary Hsueh (BDS HR Director)
 - OR
 - Naseem Ghaffari Interim (CSS HR Supervisor)

CSS TEAM 9

Staff & Non-Senate Academic HR Support



- ACRONYM KEY**
- BDS = Biosciences Divisional Services
 - BSP = Biology Scholars Program
 - CRL = Cancer Research Lab
 - EML = Electron Microscope Lab
 - IB = Integrative Biology
 - MCB = Molecular & Cell Biology

KEY Supervisor Position

BDS Finance Unit

Interim Director Mark Jenkinson 643-5909 mjenkinson@berkeley.edu

Financial Services Director Sharon Gillars 643-8127 sgillars@berkeley.edu
--

BDS Financial Analyst 4 Joe Magliaro 423-0662 ajmagliaro@berkeley.edu (0.50)
--

IB / MCB Financial Services Analyst 2 Adriana Trenado 643-3174 frias@berkeley.edu (0.50)

IB Financial Analyst 3 (Vacant)

MCB Financial Services Analyst 3 Tanis Kidd 644-7249 tkidd@berkeley.edu

IB / MCB Financial Analyst 3 Jaime Turnbull-Dreher 643-9987 jtdreher@berkeley.edu
--

MCB Financial Analyst 3 Teresa Granados 642-5864 teresa_granados@berkeley.edu

CSS TEAM 4 & 9
Business & Financial Services
Purchasing, Travel & Entertainment

Campus Shared Services Chief Operating Officer Peggy Huston 664-9299 phuston@berkeley.edu

Travel & Entertainment Supervisor (Vacant) 644-9286 jpalapaz@berkeley.edu
--

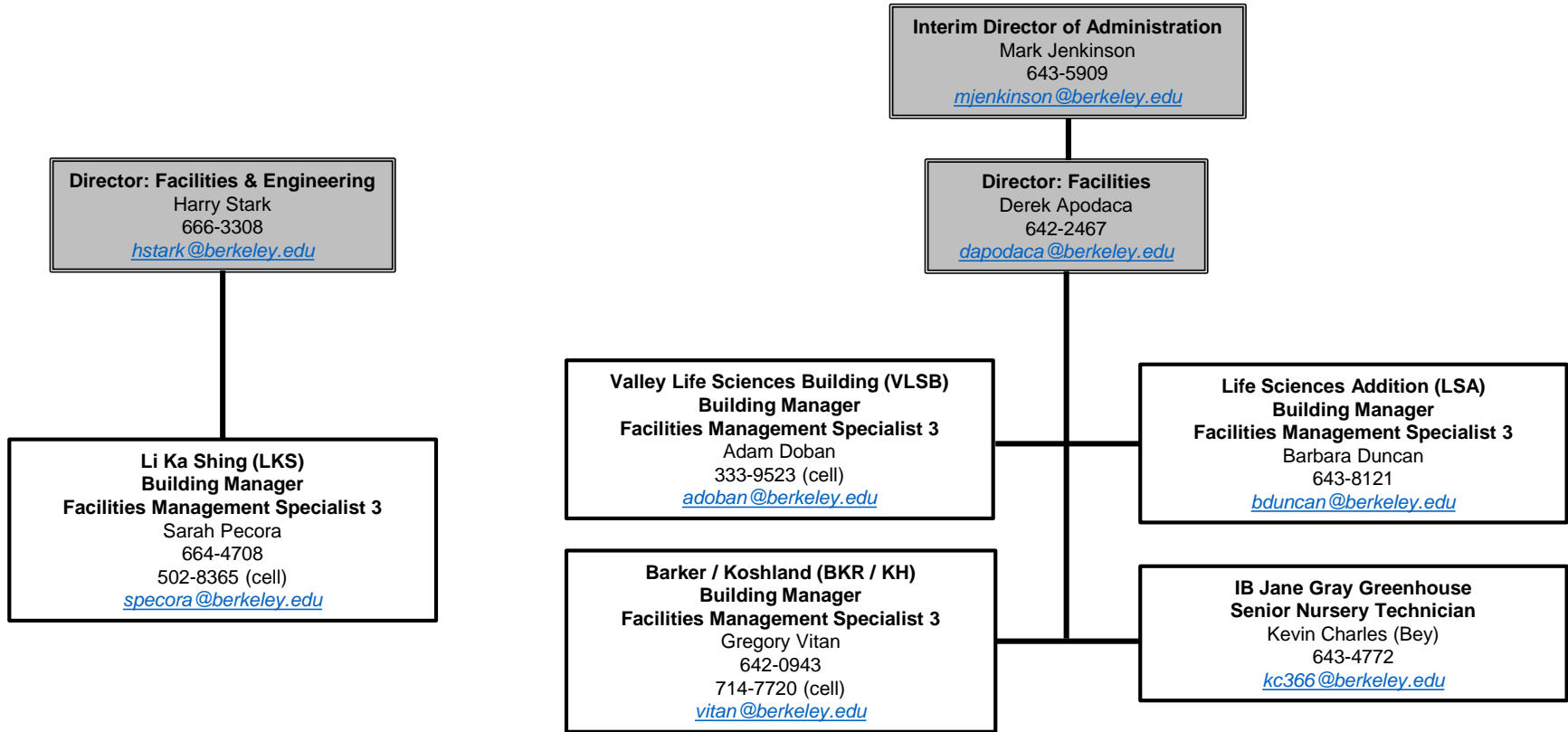
Purchasing Supervisor (Vacant) 644-9290 rbaca@berkeley.edu
--

Travel & Entertainment Assistant Team 4 Leaf Grenoble 664-9469 leaf@berkeley.edu

Purchasing Analyst 3 Albert Liu 664-9385 aliu0110@berkeley.edu

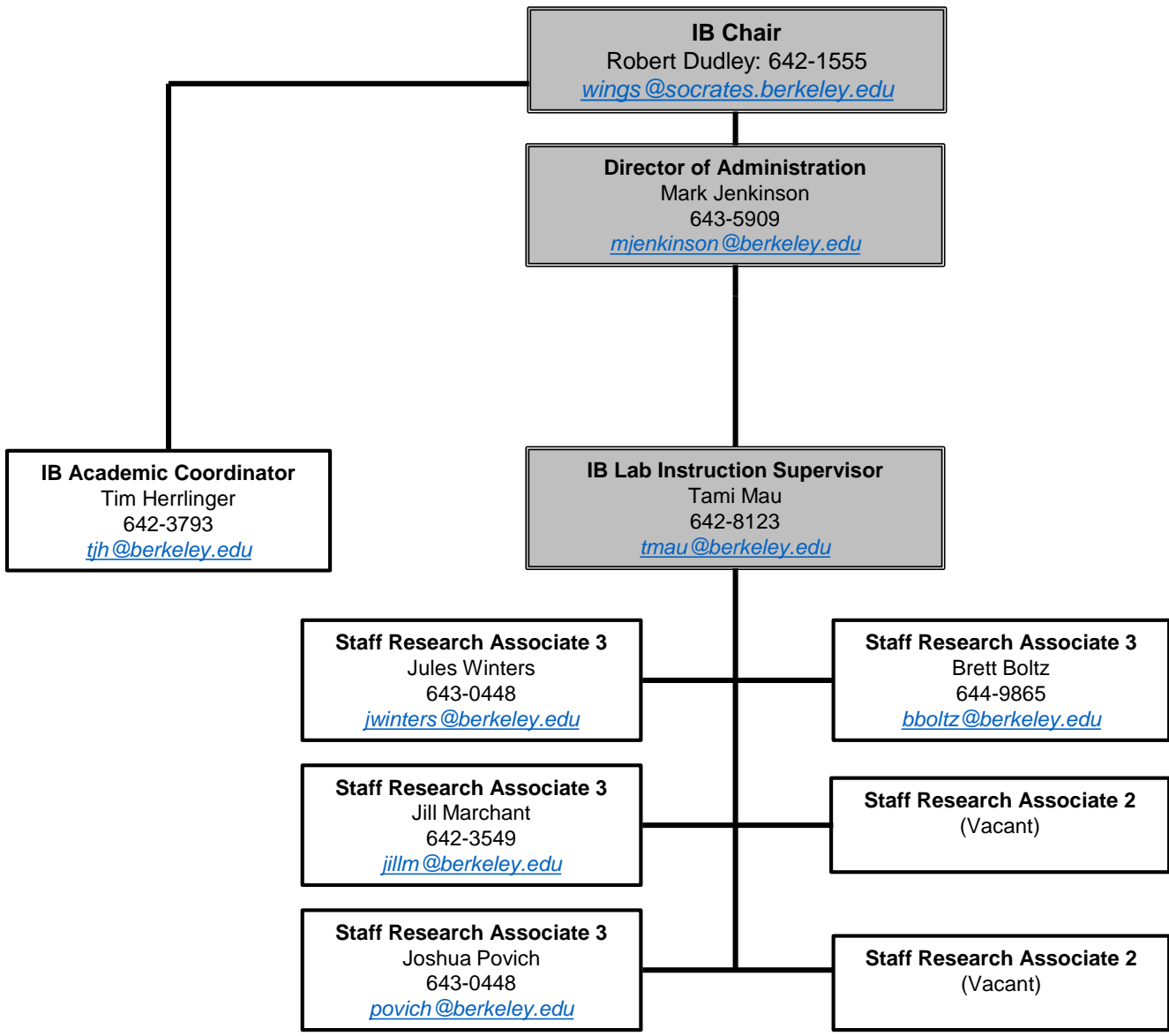
Travel & Entertainment Assistant Team 9 Liway Martinez 664-9570 liwaym@berkeley.edu
--

Purchasing Assistant Sue Burchfield 664-9564 sburch@berkeley.edu



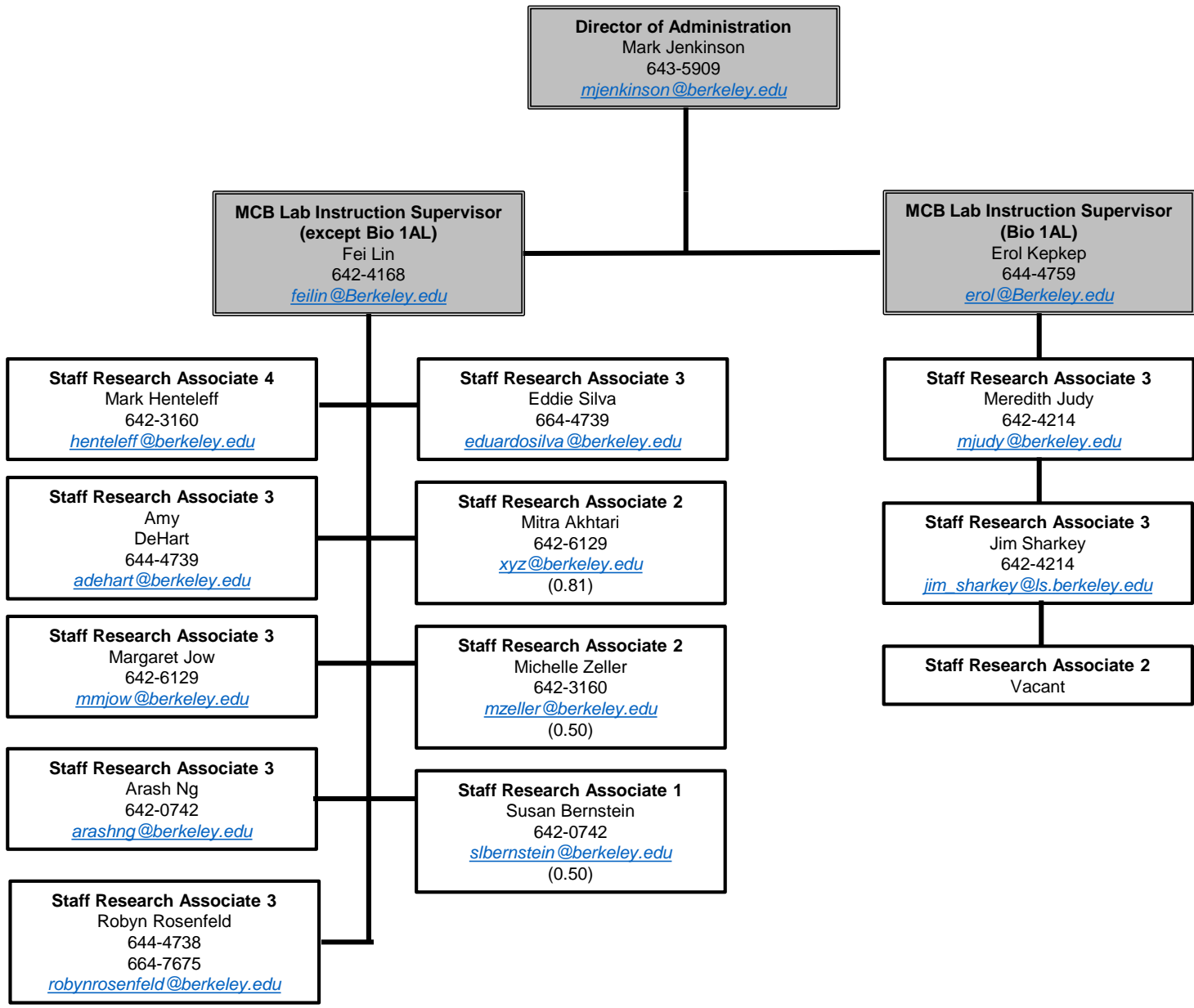
Laboratory Course Support
Integrative Biology (IB)

KEY
Supervisor
Position

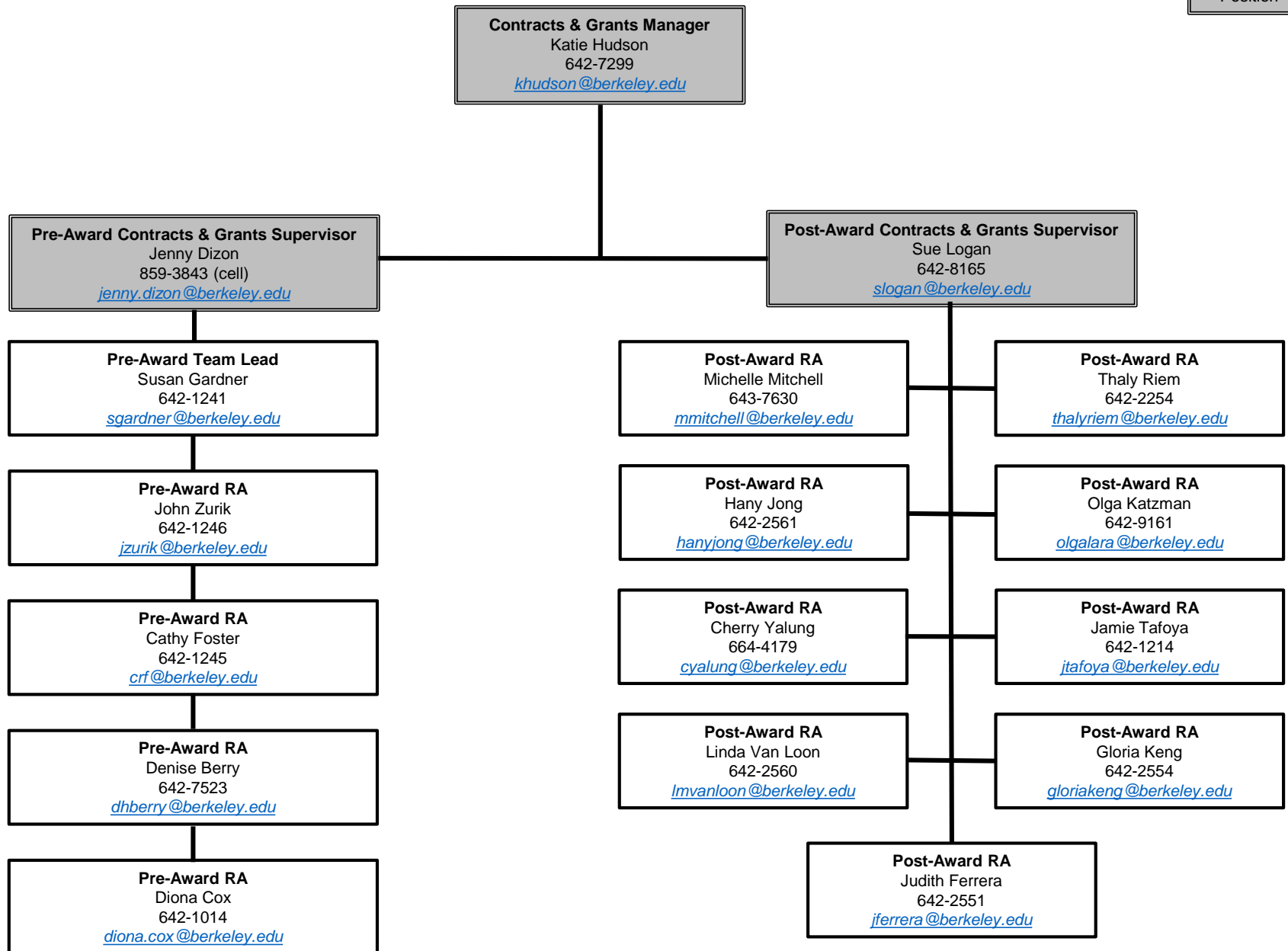


Laboratory Course Support
Molecular & Cell Biology (MCB)

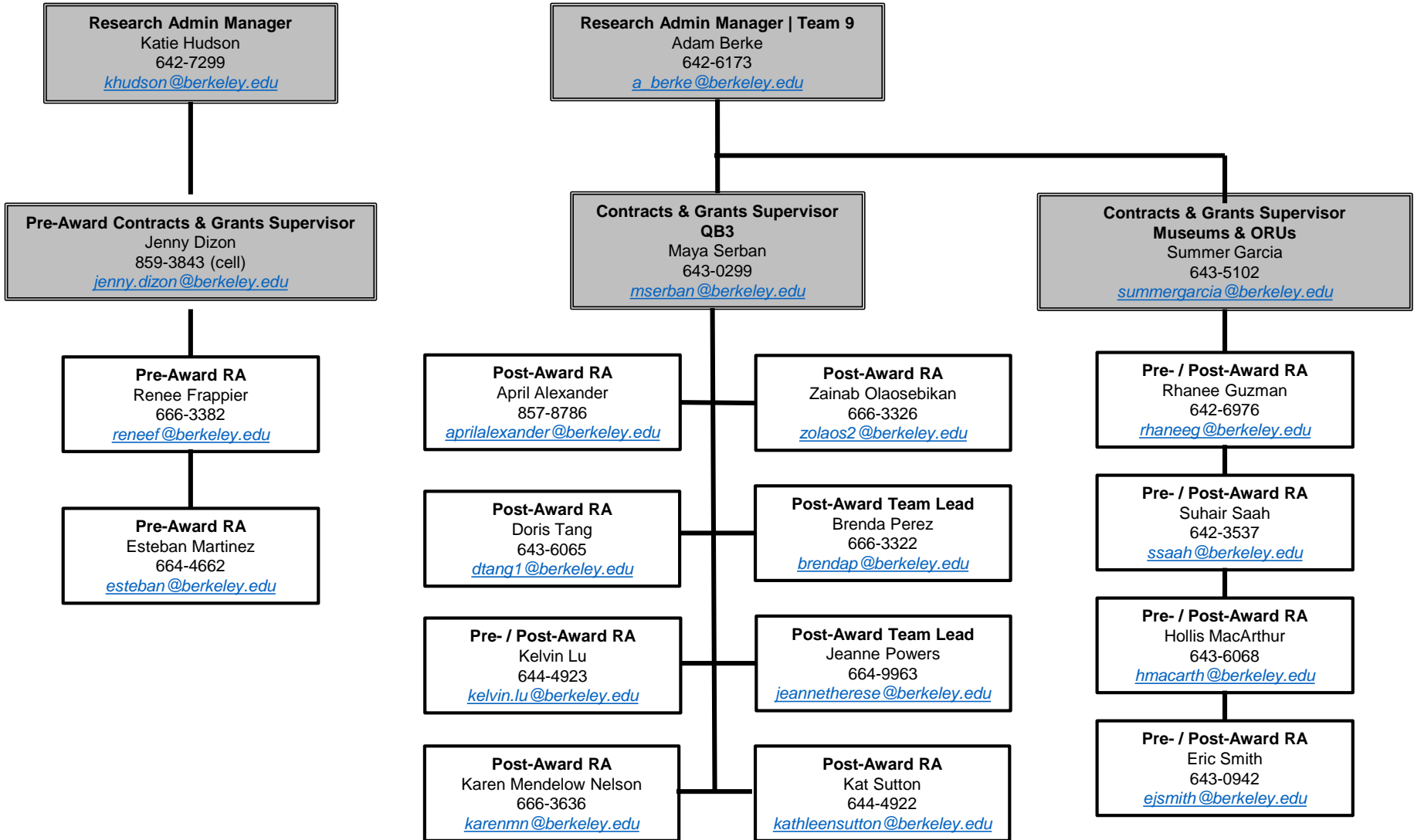
KEY
Supervisor
Position



KEY
Supervisor
Position

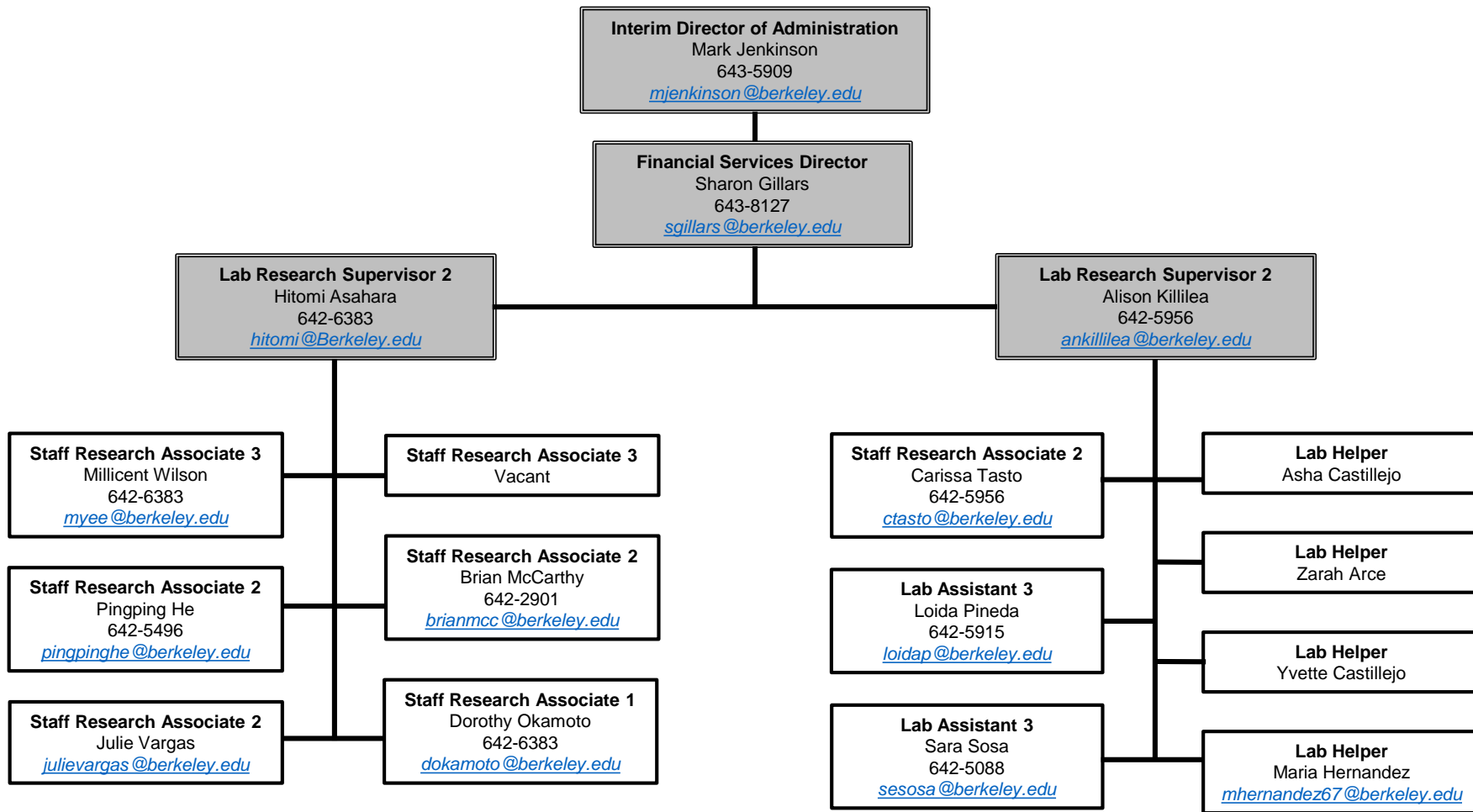


KEY
Supervisor
Position



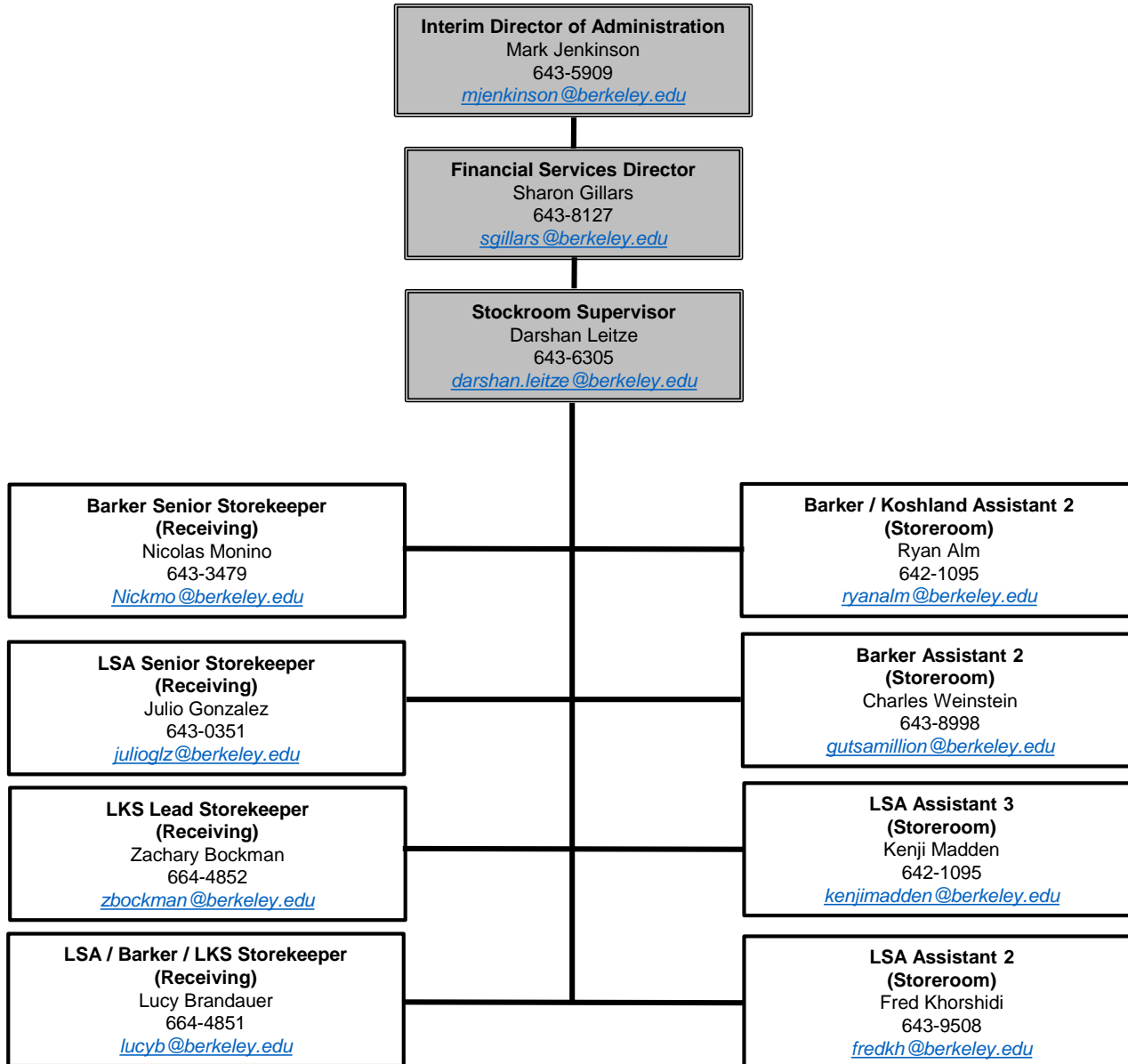
Scientific Support Facilities
(DNA Sequencing, Tissue Culture, Fly Food, On-Call Glassware Washing, Media Prep & Laboratory Course Support)
Molecular & Cell Biology (MCB)

KEY
Supervisor
Position



Stockroom, Receiving & Mail
Biosciences Divisional Services (BDS)

KEY
Supervisor
Position



BDS

Interim Director of Administration
Mark Jenkinson
643-5909
mjenkinson@berkeley.edu

Applications Programmer 4
Karin Hansen
643-5294
khansen@berkeley.edu
(0.50)

Information Systems / Tech Analyst 3
Matt Paul
643-5294
mattpaul@berkeley.edu

CSS TEAM 4 IT

CSS IT Director
Jerry Yerardi
664-9259
yerardijerry@berkeley.edu

CSS IT Deputy Director
Kyle Pope
664-9260
kyle.pope@berkeley.edu

Service Desk Supervisor
Sally Baker
664-9233
sally.baker@berkeley.edu

Field Team Supervisor
Noah McGee
725-1379
nkmcgee@berkeley.edu

Service Desk Technicians
664-9000 option 1
itcsshelp@berkeley.edu

Darrell Adler
Carol Chapman
Eric Fong
Charles Heinz
David Holt
David Lee
Theo Mak
Melaniece Parker
Donson Toy
Aaron Turner
John Valmores
Toni Ward

Field Technicians
664-9000 option 1
itcsshelp@berkeley.edu

Calvin Burnes
Michelle Dunlevy
Roger Emond
Paul Garnett
JJ Howard
Ben Kaaya
Brett Larson
Eric Maddy
Dustin Miller
Larry Peng
Carl Petroff
Vivian Sophia
Jason Trout